

Skylight  
music theatre

Skylight's  
64<sup>TH</sup>  
SEASON!

2023-24 SEASON

**SPRING AWAKENING**

**March 1 - 17, 2024**

# An Evening with **Tim Rice**



**Saturday, March 23<sup>rd</sup> at 7:30 p.m.**

Musical Theatre legend, Tim Rice, will share an evening of stories and songs from his greatest hits. He will be joined onstage by seven Skylight artists and a live band for this unforgettable, once-in-a-lifetime evening.

This event benefits Skylight Music Theatre.

Tickets:

**\$75**

**\$125** VIP tickets including  
Meet & Greet with Tim Rice  
& a champagne toast

Purchase your tickets at [www.skylightmusictheatre.org](http://www.skylightmusictheatre.org)

# SUPPORT MILWAUKEE'S HOME FOR MUSIC THEATRE

DONATIONS AT THE FOLLOWING LEVELS  
WILL HELP SUPPORT SKYLIGHT.

## Donate per Week    Donate per Year

\$5	\$260
\$10	\$520
\$15	\$780
\$20	\$1,040
\$25	\$1,300
\$30	\$1,560
\$40	\$2,080
\$50	\$2,600
\$75	\$3,900
\$100	\$5,200
\$125	\$6,500
\$175	\$9,100
\$300	\$15,600
\$500	\$26,000

## Sponsorship

- Supports educational outreach program
- Men's shoes for cast of *Spring Awakening*
- Champagne toast for opening nights for the season
- One production's wireless microphones
- COVID and other health safety materials for one production
- Paint materials for one production
- Tuning a piano for the entire season
- One of five sets of new curtains for stage
- Prop materials for one production
- Lighting materials for one production
- One of two lenses for projection systems
- Scenic or wardrobe materials for one production
- Replacement of main curtain
- One of two projectors for scenic enhancement

**Skylight**  
music theatre

Scan Here  
to Donate



Michael Unger  
Artistic Director

Susan Varela  
Executive Director

# Skylight music theatre

and



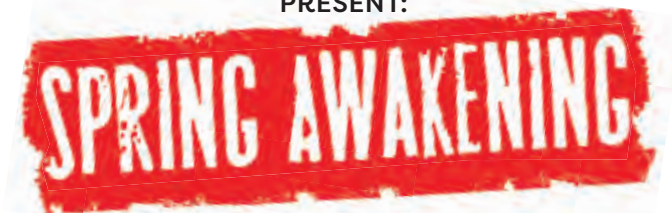
Bob  
Balderson



John  
Peters

Maihaugen  
Foundation

PRESENT:



Book & Lyrics by **Steven Sater** Music by **Duncan Sheik**  
Based on the play *Spring Awakening* by **Frank Wedekind**

Orchestrations by **Duncan Sheik**  
Vocal Arrangements by **AnnMarie Milazzo**  
String Orchestrations by **Simon Hale**

March 1-17, 2024 | Cabot Theatre | Broadway Theatre Center  
Co-Directed by Artistic Director **Michael Unger\*\*\*** and **Alexandria Wailes\*\*\***  
Choreographer **Reed Luplau**  
Music Director **Eric Svejcar**

Lighting Designer **Annie Wiegand**  
Costume Designer **Misti Bradford**  
Sound Designer **Chad Parsley**  
Associate Sound Designer **Steve Tonar**  
Scenic Consultant **Simone Tegge**  
Production Stage Manager **Matthew Silar\***  
Resident Assistant Stage Manager **Jordan Ilyssa Angelo\***  
Assistant Stage Manager **Devon Wiensch**

*Spring Awakening* is presented through special arrangement with Music Theatre International (MTI).

All authorized performance materials are also supplied by MTI.  
[www.mtishows.com](http://www.mtishows.com)

Any video and/or audio recording of this production is strictly prohibited.

Produced on Broadway by, IRA PITTELMAN, TOM HULCE, JEFFREY RICHARDS, JERRY FRANKEL, ATLANTIC THEATER COMPANY, Jeffrey Sine, Freddy DeMann, Max Cooper, Mort Swinsky/Cindy and Jay Gutterman/Joe McGinnis/Judith Ann Abrams, ZenDog Productions/CarJac Productions, Aron Bergson Productions/Jennifer Manchesterian/Ted Snowdon, Harold Thau/Terry E. Schnuck/Cold Spring Productions, Amanda Dubois/Elizabeth Eynon Wetherell, Jennifer Maloney/Tamara Tunie/Joe Cilibrasi. The world premiere of "SPRING AWAKENING" was produced by the Atlantic Theater Company by special arrangement with Tom Hulce & Ira Pittelman.

Season Sponsored by



This project is sponsored in part by a grant from the Wisconsin Arts Board with Endowment from the State of Wisconsin and the National Endowment for the Arts.



\*Appearing through an agreement between Skylight Music Theatre and Actors' Equity Association, the Union of Professional Actors and Stage Managers in the United States.



\*\*Member of United Scenic Artists 829



The Director is a member of the STAGE DIRECTORS AND CHOREOGRAPHERS SOCIETY, an independent national labor union.

\*\*\*The Directors are members of the Stage Directors and Choreographers Society, an independent national labor union.

# A NOTE FROM THE ARTISTIC DIRECTOR



We promised this production of *Spring Awakening* to you in February of 2020 and four years later, we have found a magical group of people who could not have assembled in any other time or place to bring it to life.

This rock musical, based on German playwright Frank Wedekind's 1891 drama, is subtitled, "A Children's Tragedy." The play's New York premiere in 1917 was all but shut down because of its controversial content and was ultimately allowed only one matinee performance. The musical which opened on Broadway in 2006 won eight Tony Awards®. This production is

inspired by the 2015 Broadway revival by Deaf West, a theatre company in Los Angeles dedicated to Deaf-centered theatre. I share directing responsibilities with renowned deaf theatre artist, Alexandria Wailes, and we have custom-built this production for Skylight. Our goal is to tell this story so that Deaf and Hearing audiences receive it at the exact same time. This is done through dual-casting, shadow signers/speakers, open captions, and choreography that is often rooted in American Sign Language. By expanding the diversity of the characters this way (not one word of the script has been changed, by the way), we underline and illuminate the struggles of the younger generation in the play.

There is an unfortunate history of the Hearing world deciding what is best for those who are Deaf, including forcing them to read lips and prohibiting the use of Sign Language. The willful ignorance that the parents perpetrate upon the younger generation in *Spring Awakening* proves detrimental for some, worse for others, unfortunate for all. There is a reason this old play, with new music, has resonated so profoundly with a younger generation of theatregoers. The topics *Spring Awakening* touches on could be ripped from today's headlines.

In a recent New Yorker article, Chicago-based, Deaf visual artist Joseph Grigely quotes an expert on color theory as saying, "When you put one color next to another, you change both." I think the same applies to the languages in this show. Spoken English and American Sign Language become something different, something more, something richer, by their mere juxtaposition to one another.

I truly wish we could have shared this gorgeous rehearsal process with you. Hands and hearts were flying, hugs and cultures were shared, tears and laughter were shed; and I witnessed the deepest of commitments to collaborative and communal storytelling. We are privileged and proud to bring you into that story today. And may all your Summers be Purple.



-Michael Unger, Artistic Director

# A NOTE FROM CO-DIRECTOR: ALEXANDRIA WAILES



Some things in this world are near guaranteed. The seasons come and go. The cycle of birth-life-death. The phases of the moon. The many colors of human nature.

A few months ago, after a great meal, I opened a fortune cookie and received the following message. “We all live under the same sky, but we don’t all see the same light.”

For me, this little and unexpected message was a great reminder of how theatre, and the power of storytelling, bring together various perspectives. One of the reasons why I deeply love doing theatre is that people come together, move through the fears of the unknown, are given permission to gain curiosity which then opens space for more exchange of knowledge and deeper conversations.

Theatre-making can also be about celebrating, elevating, amplifying the voices of those overlooked or assumed to not have anything to contribute. It is about challenging preconceptions and allowing for the reflection on how much or how little may have changed.

This *Spring Awakening* company is comprised of extremely talented Deaf, Hard-of-Hearing and Hearing people who come from various backgrounds. When Michael Unger invited me to co-direct this production, I was humbled and honored to do so. With the right resources, I understand the power and importance of creating spaces that open dialogue across generations about the things that cause discomfort. Doing this allows for more learning, which hopefully leads to healing and compassion. It is just as important to celebrate, uplift, and find the wonder in things one least expects to find them.

It has been nearly nine years since the Broadway revival of *Spring Awakening* and so much of our world has changed in how we engage with one another. I think what remains unchanged though is how much we are still compelled to come together, from various lived experiences, and share space.

Let it be in a theatre.

# CAST



## SPRING AWAKENING

Melchior.....	Caden Marshall
Wendla.....	Erin Rosenfeld*
Voice of Wendla.....	Emma Knott
Moritz.....	Joseph Saraceni
Voice of Moritz.....	Edie Flores
Ilse.....	Teagan Earley
Martha.....	Kaia Fitzgerald
Anna.....	Siena Rafter*
Thea.....	Hope Riesterer
Georg/Reinholdt.....	Zachary Iniguez
Ernst.....	Jeffrey Larson
Hanschen/Ulbrecht.....	Thomas Minkowski
Otto/Rupert.....	Aidan Black
Adult Women.....	Liz Tannebaum
Adult Women.....	Karen Estrada*
Adult Men.....	Joel Kopischke
Ensemble.....	Mayra Castrejon-Hernandez
Ensemble.....	Nicole McCarty
Ensemble.....	Dana Bixler

### UNDERSTUDIES

Understudies never substitute for listed players unless a specific notification is made at the time of the performance.

**Melchoir** – Thomas Minkowski; **Voice of Wendla** – Hope Riesterer; **Moritz** – Jeffery Larson; **Ilse** – Siena Rafter\*; **Thea/Martha** - Nicole McCarty; **Anna** – Dana Bixler; **Adult Women** - Teagan Earley; **Adult Men** – Aidan Black



# ORCHESTRA

Violin.....	Pamela Simmons
Viola .....	Olga Tuzhilkov
Cello .....	Scott Cook
Bass .....	Mike Ritter
Guitars .....	Chris Newlin
Drums and Percussion .....	Michael (Ding) Lorenz

# ASL TEAM

Lead Interpreters.....	JO Welch, Gordon Vernon
ASL Interpreters .....	Pamela Sue Conine, Dianna Dentino, Eve Eiseman, Amy Hogle
Senior Student Interpreters.....	Nix Carlson, Tanner Matthew Fowler, Maya Beth Shub
Junior Student Interpreters.....	Katrina Lynn Brinkman, Sorelle Gonzalez, Helena Rae Meyer, Ashley Rahl

Special thanks to UW-Milwaukee American Sign Language/English Interpreting Program

# PRODUCTION SUPPORT

Directors of Artistic Sign Language.....	Michelle Mary Schaefer, Mayra Castrejon-Hernandez
Intimacy Director.....	Michelle Mary Schaefer
Fight Director.....	Jamie Cheatham
Assistant Intimacy Director/Assistant Fight Director.....	Marcee Doherty
Assistant Director .....	Marie Helser
Director of Production and Facilities.....	Matthew Curtis
Assistant Director of Production and Facilities .....	Jordan Ilyssa Angelo
Technical Director .....	Joseph Piirto
Scene Shop Supervisor/Fleet Manager.....	Islay Reed
Scenic Carpenters.....	Islay Reed, Nate Pilarski
Scenic and Properties Painter .....	Talia Last
Properties Supervisor .....	Simone Tegge
Props Builders .....	Amaya Rockett
Lighting Supervisor.....	Dovie Hughes
Electricians.....	Isabelle Flores, Zoe Lucas, Nate Pilarski, Rollie Layman
Follow Spot Operator .....	Nate Pilarski
Interim Audio Supervisor .....	Steve Tonar
Front of House Audio Engineer .....	Jack Purves



Audio Assistant ..... Jos Olson  
 Costume Director ..... Jeanne Schrank  
 Wardrobe Supervisor ..... Carly Coldren  
 Wardrobe Cover..... Jessica Llanas  
 Stitcher Supervisor ..... Leslie Vaglica  
 Stitchers .....Carly Coldren, Kennedy Frick, Braden Miller, Michelle Catalan,  
 Kalyn Diercks, Jamie Lynn Mercado  
 Keyboard Programmer .....David Bonofiglio  
 Graphic Design Support ..... Robert “Bebo” Nelson  
 Photographer ..... Mark Frohna  
 Communications Consultant..... Susan Heymann



# MUSICAL NUMBERS

## ACT ONE

Mama Who Bore Me.....	Wendla
Mama Who Bore Me (Reprise).....	Wendla and Girls
All That's Known.....	Melchior
The Bitch of Living.....	Moritz, Melchior, and Boys
My Junk.....	Girls and Boys
Touch Me.....	Boys and Girls
The Word of Your Body.....	Wendla and Melchior
The Dark I Know Well.....	Martha, Ilse, and Boys
The Word of Your Body (Reprise).....	Otto and Georg
And Then There Were None.....	Moritz and Boys
The Mirror-Blue Night.....	Melchior and Boys
I Believe.....	Boys and Girls

## ACT TWO

The Guilty Ones.....	Wendla, Melchior, Boys, and Girls
Don't Do Sadness.....	Moritz
Blue Wind.....	Ilse
Don't Do Sadness/Blue Wind (Reprise).....	Moritz and Ilse
Left Behind.....	Melchior, Boys, and Girls
Totally Fucked.....	Melchior and Company
The Word of Your Body (Reprise).....	Hanschen, Ernst, Boys, and Girls
Those You've Known.....	Melchior, Moritz, Wendla
Purple Summer.....	Full Company

# *Not a Bad Seat in the House*



*See More Projects*



**David J. Frank**  
Landscape Contracting

**Request a quote today at [davidjfrank.com](http://davidjfrank.com)**  
*Southeastern Wisconsin's premier landscaping company*

# WHO'S WHO IN THE CAST



Dana Bixler



Aidan Black



Mayra Castrejon-Hernandez



Teagan Earley



Karen Estrada



Kaia Fitzgerald



Edie Flores



Zachary Iniguez



Emma Knott



Joel Kopischke



Jeffrey Larson



Caden Marshall



Nicole McCarty



Thomas Minkowski



Siena Rafter



Hope Riesterer



Erin Rosenfeld



Joseph Saraceni



Liz Tannebaum

# BIOS

**Dana Bixler (Ensemble)** is proud to be making her debut at Skylight Music Theatre. She graduated from Wright State University with a BFA in Acting. Credits: *The Secret Garden* (Rose), *A Midsummer Night's Dream* (Hermia), *The Little Mermaid* (Jetsam), *The Children's Hour* (Mary Tilford), and *Spring Awakening* (Wendla). Also voice over for Netflix, Nickelodeon, and Audible. She would like to thank her family and her love Dylan for all their love. [danabixler.com/@dana.bixler](http://danabixler.com/@dana.bixler).

**Aidan Black (Otto/Rupert)** Skylight debut! Aidan is a Senior in the UW-Milwaukee Musical Theatre BFA program. Pursuing a minor in ASL Studies, he is passionate about helping bridge the gap between live theatre and Deaf Culture. Recent credits include Smee in *Peter and the Starcatcher*, another Deaf led project at the Janesville Performing Arts Center, and Rick/Lorraine in *Bat Boy* with Outskirts Theatre Company, where he is a resident artist. Love to his partner Lo, his family, and his instructors at UWM.

**Mayra Castrejon-Hernandez (Ensemble/DASL)** was born in Guadalajara, Mexico then moved to Milwaukee where she was raised. She's an actress and Director of Artistic Sign Language (DASL). Mayra has also worked as a Director of Artistic Sign Language for Concerts.

**Teagan Earley (Ilse)** is a Chicago-based storyteller, ecstatically making her Skylight debut! Credits include Judas in *Jesus Christ Superstar* (Stadium Concert Tour), Connie in *Come Blow Your Horn* (New Theatre), *Sing Out!* & *Queer Eye* (Second City), Betty in *Out of the Blue* (Weidner Center Premiere), Helena in *Midsummer Night's Dream* and Daisy in *Great Gatsby* (NDSF), and Lucille in *Parade* (Theatre Nebula). Other: *Chicago Fire*, Chicago Shakespeare's Parks touring company, and playing Athena on the #2 Billboards Charts Album of EPIC the Musical. [www.teaganearley.com](http://www.teaganearley.com)

**Karen Estrada\* (Adult Women)** is an actor, director and theater educator who calls Milwaukee home. Her previous Skylight credits include *Sunday in the Park with George*, *Into the Woods*, *I Love You, You're Perfect, Now Change*, the MOT collaboration of *Ruddigore*, *Being Earnest*, *The Full Monty* and eight seasons of KIDSWrites. She's acted or direct-

ed at Chamber Theater, First Stage, Next Act, Renaissance Theaterworks, Marquette University, Forward Theater, Milwaukee Opera Theatre, Third Avenue Playworks and is a three-time alumna of the Disney on Classic Japan tour.

**Kaia Fitzgerald (Martha)** [she/they] is a hard-of-hearing actress from St. Paul, Minnesota. She is currently a senior at UW-Stevens Point pursuing a BFA in Musical Theatre. She is delighted to be making her Skylight Music Theatre debut in such an impactful show. Recent/Favorite Credits include Southern Plains Productions: *Silent Sky* (Henrietta Leavitt), Lyric Repertory Theatre: *The Marvelous Wonderettes* (Cindy Lou), *Twelfth Night* (Maria), Hope Summer Repertory Theatre: *The Color Purple* (Squeak), and *Gentleman's Guide to Love & Murder* (Woman 3, U/S Phoebe). Grateful to God & Family. [Kaiat Fitzgerald.com](http://Kaiat Fitzgerald.com)

**Edie Flores (Voice of Moritz/Dieter)** [he/him] is a California based actor here for the first time in Milwaukee! He is honored to be making his SMT debut with this powerful version of his favorite musical! He recently directed a production of *Alice by Heart* and closed another production of *Spring Awakening* as Melchior. Other credits include: *Little Shop of Horrors* (Seymour), *Spring Awakening* (Moritz), *Cry Baby* (Cry Baby), *Next to Normal* (Gabe), *The Little Mermaid* (Prince Eric), *The Rocky Horror Show* (Frank N Furter), and *Heathers* (JD).

**Zachary Iniguez (Georg/Reinhold)** is thrilled to be making his Skylight Music Theatre debut! He has previously appeared as Custus/Perkins in *Crazy for You* at Tent Theatre and *Brigadoon* in Concert, presented in conjunction with the Springfield Symphony Orchestra. Having no prior experience working with Deaf and hard-of-hearing folks, he would like to thank the rest of the *Spring Awakening* cast and production team for their patience and support as he stumbles through this process.



# Trust Your Health to One of Milwaukee's Most Respected Medical Practices.

It's important to choose a physician who will listen closely to your needs and respond genuinely to your concerns. Fortunately for you and your family, our physicians have been providing exceptional care in Milwaukee and Ozaukee for over 120 years.

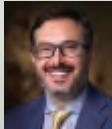
## INTERNAL MEDICINE



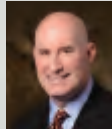
Kathleen Baugrud, M.D.



John Beltz, M.D.



Avi Bernstein, M.D.



Matthew Connolly, M.D.



Kevin DiNapoli, M.D.



Deirdre Faust, M.D.



Scott Jorgensen, M.D.



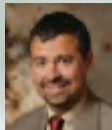
Unchu Ko, M.D.



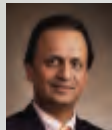
David Lucke, M.D.



Rachel Osterbaan, M.D.



John Sanidas, M.D.



Abraham Varghese, M.D.



James Volberding, M.D.



Dima Adl, M.D.



Jay Balachandran, M.D.



Burak Curses, M.D.

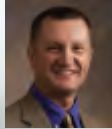
## ENDOCRINOLOGY



Amy DeGueme, M.D.



Elaine Drobny, M.D.



Antoni Gofron, M.D.



Usonwanne Ibekwe, M.D.



Brent Jones, M.D.



Kawaljeet Kaur, M.D.



Anne Lent, M.D.



Kristin Schroeder, M.D.

## GASTROENTEROLOGY



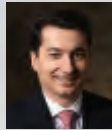
Keely Browning, M.D.



Abdullah Fayyad, M.D.



Gene Kligman, M.D.



Venelin Kounev, M.D.



Srihari Ramanujam, M.D.



Chad Stepke, M.D.

## PULMONARY



Dima Adl, M.D.



Jay Balachandran, M.D.



Burak Curses, M.D.

## ALLERGY & IMMUNOLOGY



Anne Lent, M.D.



Kristin Schroeder, M.D.

# MADISON MEDICAL AFFILIATES



**MADISON MEDICAL**  
MILWAUKEE · MEQUON

MadisonMedical.com | 414.272.8950

## DERMATOLOGY



Amanda Cooper, M.D.



Tracy Donahue, M.D.



Valerie Lyon, M.D.



Jack Maloney, M.D.



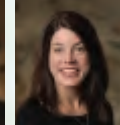
Jason Rosenberg, M.D.



Debra Scarlett, M.D.



Thorsteinn Skulason, M.D.



Heather Wells, M.D.

## SURGERY



Richard Cattery, M.D.



Jasna Coralic, M.D.



Alyandra Lal, M.D.



Joseph Regan, M.D.



Craig Siverhus, M.D.



Carmen Balding, M.D.



Camile Hessel, M.D.

## MOHS SURGERY

## UROLOGY



Kevin Gee, M.D.



Christopher Kearns, M.D.



Jonathan Berkoff, M.D.



Katya Frantskevich, M.D.



Shireen Jayne, D.O.



Jennifer Moralez, M.D.



Nicolette Dovensau, M.D.

## OBSTETRICS & GYNECOLOGY

## UROGYNECOLOGY

## COMPREHENSIVE EYE CARE



Lisa Bennett, M.D.



Alwin Edakkunathu, O.D.



James Ivanoski, O.D.



Joseph Zilisch, M.D.

Visit [MadisonMedical.com](http://MadisonMedical.com)  
to learn more about our doctors  
and their specialties.



# BIOS CONTINUED

**Dana Bixler (Ensemble)** is proud to be making her debut at Skylight Music Theatre. She graduated from Wright State University with a BFA in Acting. Credits: *The Secret Garden* (Rose), *A Midsummer Night's Dream* (Hermia), *The Little Mermaid* (Jetsam), *The Children's Hour* (Mary Tilford), and *Spring Awakening* (Wendla). Also voice over for Netflix, Nickelodeon, and Audible. She would like to thank her family and her love Dylan for all their love. [danabixler.com/@dana.bixler](http://danabixler.com/@dana.bixler).

**Aidan Black (Otto/Rupert)** Skylight debut! Aidan is a Senior in the UW-Milwaukee Musical Theatre BFA program. Pursuing a minor in ASL Studies, he is passionate about helping bridge the gap between live theatre and Deaf Culture. Recent credits include Smee in *Peter and the Starcatcher*, another Deaf led project at the Janesville Performing Arts Center, and Rick/Lorraine in *Bat Boy* with Outskirts Theatre Company, where he is a resident artist. Love to his partner Lo, his family, and his instructors at UWM.

**Mayra Castrejon-Hernandez (Ensemble/DASL)** was born in Guadalajara, Mexico then moved to Milwaukee where she was raised. She's an actress and Director of Artistic Sign Language (DASL). Mayra has also worked as a Director of Artistic Sign Language for Concerts.

**Teagan Earley (Ilse)** is a Chicago-based storyteller, ecstatically making her Skylight debut! Credits include Judas in *Jesus Christ Superstar* (Stadium Concert Tour), Connie in *Come Blow Your Horn* (New Theatre), *Sing Out!* & *Queer Eye* (Second City), Betty in *Out of the Blue* (Weidner Center Premiere), Helena in *Midsummer Night's Dream* and Daisy in *Great Gatsby* (NDSF), and Lucille in *Parade* (Theatre Nebula). Other: *Chicago Fire*, Chicago Shakespeare's Parks touring company, and playing Athena on the #2 Billboards Charts Album of EPIC the Musical. [www.teaganearley.com](http://www.teaganearley.com)

**Karen Estrada\* (Adult Women)** is an actor, director and theater educator who calls Milwaukee home. Her previous Skylight credits include *Sunday in the Park with George*, *Into the Woods*, *I Love You, You're Perfect, Now Change*, the MOT collaboration of *Ruddigore*, *Being Earnest*, *The Full Monty* and eight seasons of KIDSWrites. She's acted or direct-

ed at Chamber Theater, First Stage, Next Act, Renaissance Theaterworks, Marquette University, Forward Theater, Milwaukee Opera Theatre, Third Avenue Playworks and is a three-time alumna of the Disney on Classic Japan tour.

**Kaia Fitzgerald (Martha)** [she/they] is a hard-of-hearing actress from St. Paul, Minnesota. She is currently a senior at UW-Stevens Point pursuing a BFA in Musical Theatre. She is delighted to be making her Skylight Music Theatre debut in such an impactful show. Recent/Favorite Credits include Southern Plains Productions: *Silent Sky* (Henrietta Leavitt), Lyric Repertory Theatre: *The Marvelous Wonderettes* (Cindy Lou), *Twelfth Night* (Maria), Hope Summer Repertory Theatre: *The Color Purple* (Squeak), and *Gentleman's Guide to Love & Murder* (Woman 3, U/S Phoebe). Grateful to God & Family. [Kaiat Fitzgerald.com](http://Kaiat Fitzgerald.com)

**Edie Flores (Voice of Moritz/Dieter)** [he/him] is a California based actor here for the first time in Milwaukee! He is honored to be making his SMT debut with this powerful version of his favorite musical! He recently directed a production of *Alice by Heart* and closed another production of *Spring Awakening* as Melchior. Other credits include: *Little Shop of Horrors* (Seymour), *Spring Awakening* (Moritz), *Cry Baby* (Cry Baby), *Next to Normal* (Gabe), *The Little Mermaid* (Prince Eric), *The Rocky Horror Show* (Frank N Furter), and *Heathers* (JD).

**Zachary Iniguez (Georg/Reinhold)** is thrilled to be making his Skylight Music Theatre debut! He has previously appeared as Custus/Perkins in *Crazy for You* at Tent Theatre and *Brigadoon* in Concert, presented in conjunction with the Springfield Symphony Orchestra. Having no prior experience working with Deaf and hard-of-hearing folks, he would like to thank the rest of the *Spring Awakening* cast and production team for their patience and support as he stumbles through this process.

# BIOS CONTINUED

**Emma Knott (Voice of Wendla)** [she/her] is a Chicago-based actor and is thrilled to be back at Skylight after playing Ali/Ensemble in *Mamma Mia!* and Poppy in *Noises Off*. Her recent work has led her on screen where she played the lead in a feature film earlier this year. Emma enjoys comedy writing and performance, songwriting, and creating original film work. Thanks to friends and fam for their support! Connect with Emma at [emmaknott.com](http://emmaknott.com).

**Joel Kopischke (Adult Men)** [he/they] is hard of hearing and has worn double hearing aids since his early-30's. He's honored and humbled to be part of this production. He began his professional performing career over 50 years ago and has been lucky enough to appear at Skylight many times since 1987 (*Noises Off*, *My Fair Lady*, *The Music Man*, *Dames at Sea*, *West Side Story*, etc.) as well as the MSO, Milwaukee Opera, First Stage, TAP, & Melody Top. When not doing stage, screen, or voiceover work, Joel leads personal empowerment and DEL trainings and helps food insecure communities open grocery stores. Love to Ro & Kat & Anne. Peace.

**Jeffrey Larson (Ernst)** [he/him/his] is a tenor based in Madison, WI. He has experience singing in UW-Madison Opera as Papignol (*La Bohème*), Brack (*Kurt Weill Cabaret*), and Chorus Member (*Falstaff*). He also has experience in music directing at UW-Madison (*Ghost Quartet*) and pit piano (*Ordinary Days*). Jeff is a proud Hard of Hearing individual and loves spending time reading or being outdoors!

**Caden Zane Marshall (Melchior)** [he/him] is a Chicago-based performer/American Sign Language interpreter, for which he holds dual bachelor's degrees from Columbia College. Notable credits include: Mischa in *Ride The Cyclone* (4 Chairs Theatre), Asst. Director for *Peter & the Starcatcher* (Janesville Performing Arts), Hanschen in *Spring Awakening* (Act of Faith Prod.), and Leather Apron in *1776* (Edge of Orion). Caden is also well known as @TheMusicalDealer on social media, where he spotlights underappreciated works of musical theatre.

**Nicole McCarty (Ensemble)** [she/her] is a Milwaukee based actor, singer, and music director; she is absolutely thrilled to be debuting with Skylight on this re-imagined production of *Spring Awakening!* Some of the theater companies she has worked with include Black Arts MKE, The Constructivists, Falls Patio Players, First Stage, Fleeing Artists, Kohls Wild Theater, Milwaukee Opera Theatre, Outskirts, Sunstone Studios, and Waukesha Civic Theatre. Nicole also sings with a seven-piece cover band called Montage. Dedication to her brother, Brandon (Tree).

**Thomas Minkowski (Hanschen/Ulbrecht)** is thrilled to make his professional debut with Skylight. Recent credits include Jamie in *The Last Five Years* and Anthony in *Sweeney Todd*. He has a degree in Mathematics from Webster University, and studied theater at Regents University, London. In the coming months, he will enter production for the comedy short *This Is A Robbery* as a writer. He is currently working on multiple writing and directing projects in theater and film.

**Siena Rafter\* (Anna)** [they/them] is a non-binary theater artist born and raised in New York City. Broadway: *King Lear* (ASL team), *Children of a Lesser God* (Asst Director). As an actor: Off-Broadway/Lincoln Center: *Runaways*, *Deep Blue Sea*, *The Division*, *Thank you, Ryan...*, *T*, *American Song-Book Series*. The Public Theater/Delacorte: *Twelfth Night*, *Runaways*, *For the Love of Vinyl*, *From Hair to Hamilton...Gala '17*. TV: HBO's *Crashing*. @si\_enne

**Hope Riesterer (Thea)** made her Skylight debut with *Mamma Mia!* and is humbled to be brought back for another musical she holds so dear to her heart. She grew up studying with Milwaukee Ballet and First Stage's Young Company before going on to obtain a Musical Theatre BFA with a Dance minor. Recent performance credits include: *A Year with Frog and Toad*, *Hairspray*, *Trojan Women*, and *Twelfth Night*. She is a recipient for "Outstanding Choreography" from the Overture Center Jerry Awards and teaches dance at Water Street Dance.

# BIOS CONTINUED

**Erin Rosenfeld\* (Wendla)** [she/her] is beyond grateful to be part of *Spring Awakening!* She recently made her Broadway debut in *Grey House* (standby for Bernie, A1656, and Marlow). Other favorites include *Tribes* (Sylvia) and *This is Treatment*. Erin is passionate about breaking barriers in theatre and increasing Deaf representation. Offstage, her advocacy work in the Deaf community has led to features in *Teen Vogue*, *Forbes*, and more. Thank you to her family, friends, team at KMR, and everyone at Skylight!

**Joseph Saraceni (Moritz)** a California native, Joe is so excited to do his first professional show ever! This is his second time playing Moritz, which is one of his dream roles. His favorite roles include St. Jimmy in *American Idiot*, Luke Castellani in *The Lightning Thief* and Tobias in *Sweeney Todd*, which he also played twice as well! He would like to thank his parents for supporting him and the cast and crew for letting him be a part of this! His Instagram is @Joe\_saraceni

**Liz Tannebaum (Adult Women)** is thrilled to return to Milwaukee since she last performed *Children of a Lesser God* as Sarah at Marcus Performing Arts Center in 1989. She has been involved with various productions, both on stage and in films such as *What Women Want*, *Sweet Nothing in My Ear*, *Wrong Game*, and *What?*. She got her start by watching and learning from her late father, Ted Tannebaum of the renowned LakeShore Entertainment and Liz is following in her father's footsteps by supporting the Deaf Arts, Theater and Films. Liz starred and produced her own film *No Ordinary Hero*, the *SuperDeafy Movie*. She is currently a SAG-AFTRA member. In her free time, Liz enjoys working on special projects, traveling, and spending time with her family, friends and loved ones.

## CREATIVE TEAM

**Michael Unger (Co-Director/Artistic Director)** For Skylight, Michael has directed *Dennis DeYoung's The Hunchback of Notre Dame* (nine BroadwayWorld Awards - including Best Director and Best Musical), *School of Rock*, *Noises Off*, *Little Shop of Horrors*, *A Jolly Holiday: Celebrating Disney's Broadway Hits*, and *Me, Myself and I* for Skylight's Education program. Amongst many virtual offerings, he directed

the Broadway World Award-winning *Being Earnest*, now available worldwide online. He was previously the Associate Artistic Director of Off-Broadway's York Theatre; credits there include *You're A Good Man Charlie Brown* and *Big*. For nine years, he was the Producing Artistic Director of NewArts, started with a local father in response to the Sandy Hook Elementary School tragedy; directing 17 productions working with over 650 area-children. Other selected directing credits include *A Christmas Carol* (McCarter Theatre for 18 years), *Two Point Oh* (NY Times Critics' Pick), *Time Stands Still* (Cape Cod Chronicle Best 2015), *My Sister in This House* (Deaf West, Ovation Recommended), and new versions of *The Happy Time* and *The Rink*. World premieres include *The 25th Annual Putnam County Spelling Bee*, *Caligula*, and *A ROCKIN' Midsummer Night's Dream* (featured in the award-winning documentary film *Midsummer in Newtown*). He has directed 14 operas plus benefit concerts honoring Susan Stroman, André DeShields, Maltby & Shire, and Leslie Uggams; as well as for the communities of Sandy Hook, CT and Parkland, FL.

**Alexandria Wailes (Co-Director)** [she/her] is an actor, director, dancer, choreographer, advisor, and Director of Artistic Sign Language. She has worked on numerous Broadway, Off-Broadway and regional theatres, television, and film. Awards: 2022 Chita Rivera winner, recipient of 2022 Disability Futures Fellowship, 2020 Obie winner, 2020 Lucille Lortel nominee. Member of SDC, AEA and SAG-AFTRA. [www.alexandriawailes.com](http://www.alexandriawailes.com)

**Reed Luplau (Choreographer)** was born in Perth, Australia, and graduated from the Australian Ballet School. Choreography credits - *Places, Please* (Lincoln Center), *PHISH* at Madison Square Garden, Macy's Thanksgiving Day Parade, Disney Cruise Line, *Midsummer Night's Dream* for Santa Fe Opera, and Brooks Brothers 200th Birthday Celebration. Company works include The Australian Ballet, Sydney Dance Company, and West Australian Ballet. Reed's upcoming creation, *When We Touch*, a dance narrative with music by LP and set in the final week of the fall of the Berlin Wall, is currently in development. As a performer, Reed's Theatre credits include the original Broadway casts of *Moulin Rouge! The Musical*, *Natasha, Pierre, and The Great Comet of 1812*. As well as the original revival cast of *Fiddler on the Roof*, directed by Bartlett Sher and choreographed by Hofesh Schecter. Off-Broadway - ONLY

# BIOS CONTINUED

*GOLD* by Andy Blankenbuehler, and David Henry Hwang's *Kung Fu*.

**Eric Svejcar (Music Director)** is a New York-based music director, pianist and composer. At Skylight: *The Hunchback of Notre Dame*, *Ernest Shackleton Loves Me*, *Fortunate Sons*. He conducted the Roundabout/Deaf West revival of *Big River* on Broadway and the National Tour. Compositions include the scores to *Caligula* (NYMF Audience Award winner), *A Rockin' Midsummer Night's Dream* (featured in the documentary film *Midsummer In Newtown*), and the musical podcast *Loveville High* with lyricist David Zellnik (also recorded in Portuguese as *Amorlândia*). By day he is one of Broadway's most active audition pianists.

**Misti Bradford (Costume Designer)** is a professional Costume Designer, USA Local 829, an Associate Professor at the University of Wisconsin-Parkside, and currently serves as the National Vice Chair of Design, Technology, and Management for KCACTF. Misti's costume designs have been seen at Skylight, Off-Broadway, Edinburgh Fringe Festival, Renaissance Theaterworks, Milwaukee Rep, Illinois Shakespeare Festival, Merrimack Rep, Door Shakespeare, Children's Theatre of Madison, First Stage, Milwaukee Chamber, and Utah Festival Opera. Misti produced five seasons as Resident Costume Designer and three seasons as Costume Crafts Supervisor and Wig Stylist with PCPA Theaterfest and has worked as a Costume Crafts Artisan for American Players Theatre. Thank you to my inner circle for your love and support!

**Annie Wiegand (Lighting Designer)** is the first and only professional Deaf Lighting Designer in the US theatre industry. She was Second Assistant Lighting Designer on the Tony-Nominated revival of *Spring Awakening*. Notable designs with Playwrights Horizons (Off-Broadway), Kinetic Light Dance, Zach Theatre, Signature Theatre, Milwaukee Repertory Theatre, Alabama Shakespeare Festival, Dallas Theater Center, Huntington Theatre Company, and Kitchen Theatre Company. Education: MFA Lighting Design, Boston University. Associate Professor, Theatre and Dance Program, Gallaudet University. [www.anniewiegand.com](http://www.anniewiegand.com)

**Chad Parsley (Sound Designer)** is a Chicago based Sound Designer who is delighted to return to Skylight after designing sound for *The Hunchback of Notre Dame*, *Evita*, *SuperY-*

*ou*, and *Candide*. Chad has spent the last 25 years working in the sound departments of *Hamilton: An American Musical*, *The Book of Mormon*, *SIX*, *Beautiful: The Carole King Story*, *Jersey Boys*, *Tootsie*, *Rock of Ages*, *Spamalot*, and *Avenue Q*. Design credits include; *Beautiful: The Carole King Musical* (Tuacahn), *The Book of Mormon* (Networks Entertainment), *Jersey Boys* (Norwegian Cruise Lines and Las Vegas), *Coming Home For Christmas* (Silver Dollar City), *Emma* (Chicago Shakespeare Theater), *Joseph and ...* (Dallas Theater Center), *The Wiz* (Dallas Theater Center).

**Steve Tonar (Associate Sound Designer)** is excited to be back designing at Skylight Music Theatre. He was last heard designing sound for Skylight's *Xanadu* and seen designing lights for Skylight's production of *Raisin*. Past favorite design credits at Skylight include *School of Rock* and *Ernest Shackleton Loves Me*. Steve is a freelance lighting designer, sound designer, and photographer based in Milwaukee, as well as Technical Director at Greenfield High School. For Rexxy, Beary, Cleo, and Jordan.

**Simone Tegge (Scenic Consultant)** has been working in the prop shop at Skylight for five years. Her work has also been seen in recent productions at Milwaukee Chamber Theatre, Renaissance Theaterworks, and American Players Theatre. She would like to thank her parents and Frankie for their constant support!

**Matthew Silar\* (Production Stage Manager)** is a Stage Manager, Director, and Teaching Artist from Chicago. He is a grateful member of Actors' Equity Association. Chicago stage management credits include *School of Rock*, *The Sound of Music* (Paramount Theatre), *The Snow Queen* (Marriott Theatre), *Jeff & Shelly* (Theatre Wit) *Picasso at the Lapin Agile*, *Outside Mullingar*, *You're a Good Man Charlie Brown* (Citadel Theatre), and *Peter Pan* (Music Theatre Works). BFA: Abilene Christian. @matt-silar on socials!

**Jordan Ilyssa Angelo\* (Assistant Stage Manager)** This is Jordan's 13th show at Skylight as an Assistant Stage Manager! Originally from Rhode Island, Jordan is a Marquette alum who returned to Milwaukee to pursue her love of theatre. She was last "seen" dancing backstage during *Xanadu* and seen onstage—on purpose!—as a security guard in *School of Rock*. Favorite Skylight credits include *Noises Off* and *Dennis DeYoung's The Hunchback of Notre*

*Dame*. Much love to her family, 3 kitties, and Steve for supporting the dream!

**Devon Wiensch (Assistant Stage Manager)** is really excited to be working on this production of *Spring Awakening!* They've recently worked on the stage management teams at American Players Theatre, Milwaukee Chamber Theatre, and the Denver Center for the Performing Arts. Dev wants to thank their parents and pets for their unending support.

**Jamie Cheatham (Fight Director)** is a nationally recognized Fight Director with the Society of American Fight Directors (SAFD). His fight work includes such venues as the New York Shakespeare Festival, NYC Opera, the Alley Theatre (TX), Actor's Theatre of Louisville (KY), and the 2019 Broadway production of *King Lear*, starring Glenda Jackson. This past year he was the Associate Fight Director on *Purlie Victorious* currently on Broadway, and *Witch* at Renaissance Theatreworks. For Skylight he has worked on *Hunchback* and *Noises Off*.

**Michelle Mary Schaefer (Intimacy Director/DASL)** is a professional actor in both theatre and film who has performed all over the states. Schaefer has been in plays such as Joan in *Fun Home*, Hannah in *When We Were Young and Unafraid*, Sarah in *Children of a Lesser God* (7x's), Billy in *Tribes* (5x's), and Hamlet in *Hamlet*, etc. She also writes scripts, webseries, short films, TV series and feature films. Schaefer, also is a Director, Producer, DASL/ASL Consultant, and Intimacy Director. Michelle Mary Schaefer set up her own production company, Annabelle Louise Productions, in which authentic stories and representation matters. She looks forward to continuing to make a difference within the industry. [www.michellemaryschaefer.com](http://www.michellemaryschaefer.com) [www.annabellelouiseproductions.com](http://www.annabellelouiseproductions.com)

**JO Welch (ASL Coordinator / Lead Interpreter)** comes to us from Boston. A 1st Generation Latina, JO elevates her practice with trilingual and tricultural finesse. Influenced by her 30+ year commitment to the Deaf, DeafBlind, and Hard

of Hearing communities, she has interpreted Off-Broadway from the Signature Theater, Broadway in Boston, and concerts including, Bonnie Raitt and Buddy Guy. She is honored to work in the intersection of Deafness, art, and language. For more: [jowelch.com](http://jowelch.com).

**Gordon Vernon (Interpreter)** interpreting professionally since 1986, excels at performing arts interpretation; providing access at the Kennedy Center & National Theatre in DC, and in concert for icons Tina, Aretha, Whitney, Cher, Prince, & Madonna, reflects his commitment to accessible performances. Although he eagerly anticipates returning home to Puerto Rico's tropical breezes, interpreting in preparation for this production honors and unites Gordon's passion for his profession, performance art, ASL, and accessible, inclusive partnerships supporting Deaf artists. — [gordonvernon.com](http://gordonvernon.com)

**Marie Helser (Assistant Director)** is grateful for the opportunity to work with *Skylight* for the first time, especially on a show that involves their favorite thing- ASL. As a recent graduate from UW Milwaukee's ASL Studies and theater program, working on Deaf theater is her passion. Marie thanks the deaf community for all of their patience and knowledge. Recent work includes *Romeo and Juliet* (APT), *Peter and The Starcatcher* (Janesville PAC), and *Sweat* (UW Milwaukee).

**Susan Varela (Executive Director)** Originally from Milwaukee and a graduate of UW-Stevens Point, her professional career as a performer has taken her from the Broadway stage (*Les Misérables*) to the Skylight stage (*Les Misérables*, *Into the Woods*, *Wizard of Oz*, *Sweeney Todd*). She has performed at the Denver Center Theatre (Tony Award-winning season) and the Yale Repertory Theatre, among others. She has produced, directed, performed, and written for the stage and television alongside her husband, actor Andrew Varela. Susan was previously the Director of Artistic Operations for Skylight.

# SKYLIGHT MUSIC THEATRE CIRCLE OF DONORS

(July 1, 2022 – January 19, 2024)

Skylight gratefully acknowledges the following individuals, foundations, organizations, businesses, and government groups who provided generous support within the last year. Each helped Skylight to deliver exceptional music theatre productions and arts education programs for the benefit of the greater Milwaukee community. Many thanks to all the Skylight donors listed. Unfortunately, there was not space to recognize donors under \$250 whose gifts have also contributed to Skylight's success. Please refer to our website for a complete list of donors.

Special thanks to the United Performing Arts Fund, our single largest donor, for its generous annual support.

## **RICHARDSON CIRCLE**

**\$400,000 and above**

United Performing Arts Fund

## **BENEFACTOR CIRCLE**

**\$25,000-399,999**

Anonymous

The Lynde & Harry Bradley Foundation

Four-Four Foundation, Inc.

Greater Milwaukee Fund

Richard & Ethel Herzfeld Foundation

JJF Management Services Inc.

Jan Serr & John Shannon

The Estate of Donald Whitaker

## **STAR CIRCLE**

**\$10,000-25,000**

Bob Balderson

Virgilee Krueck

Howard & Sara Miller

Quarles & Brady LLP

Valerie Johnson

Irene Pilugin Skipper & Walt Skipper

The Shubert Foundation, Inc.

Vicki Reiss

We Energies Foundation

Wisconsin Arts Board

Wispact Foundation

Richard & Kay Yuspeh

Liz Levins & Herb Zien

## **SPONSOR CIRCLE**

**\$5,000-9,999**

Anonymous

Bonnie & Barry Behnken Family

Barb & Mark Bolens

Barbara Brumder Buzard Fund

at the Greater Milwaukee Foundation

Ken Dortzbach & Jennie Kent

T. Arthur & Rhonda Downey

Laura & John Emory, Jr.

Ralph G. Gorenstein Charitable Foundation

Sandy & William Haack

Margaret Heminway Wells Fund

Judy & Gary Jorgensen

KAY CEE Charitable Trust

Justine Leonard Charitable Fund

Sara & Howard Miller

Milwaukee Arts Board

Asher & Susan Nichols Family Fund

at the Greater Milwaukee Foundation

Marcia JS Richards

Blaine & Linda Rieke

Margaret Rosco

Bert L. & Patricia S. Steigleder Charitable Trust

Stollenwerk Family Charitable Foundation

The Valentine Fund of

The Cream City Foundation

## **PRODUCER CIRCLE**

**\$2,500-4,999**

Anonymous

Chris Behling

Laura Mikeworth & Jeffrey Bono

Roger Dickson

Dr. Carl W Eberbach & Elisabeth Falk

Eberbach Fund

at the Greater Milwaukee Foundation

Mary Lou Findley

Foley & Lardner LLP

Judy & David Hecker

Judy & Gary Jorgensen

Lindsey & Kyle Kopps

Kristie & Terrance Kurtenbach

L.B. & J.K.

Sally Long & Franklin Loo

Tonya & Mike Lueder

Luedke-Smith Fund

at the Greater Milwaukee Foundation

KeleMarie Lyons

Dawne and Ray Manista

Mary McNulty

Patrick Mutsune

Tim Mikeworth

Northwestern Mutual Foundation

Linda & Blaine Rieke

M Kathleen Ronan Estate

Sikich LLP

Gloria Tracy

Michael Unger

Margaret Heminway Wells Fund

at the Greater Milwaukee Foundation

Sue E. Wells

## **DIRECTOR CIRCLE**

**\$1,000-2,499**

George Banda

F. Tessa & Richard Bartels

Carolee Beutler

# SKYLIGHT MUSIC THEATRE CIRCLE OF DONORS

(July 1, 2022 – January 19, 2024)

Lawrence Bialcik  
Mark & Karen Bitzan  
Mr. & Mrs. William H. Boles  
Mr. & Ms. Michael Bula  
Briggs & Stratton Corporation Foundation  
John & Susan Brown  
Elizabeth & Brian J. Casey  
John Cegielski  
Margaret & B. Lauren Charous  
Jane & William Crise  
Karen & Jim D'Ambrisi  
Dominion Energy Charitable Foundation  
Drs. Karin & Peter Drescher  
Steve & Buffy Duback  
Heather & Brian Dunn  
Giacomo Fallucca  
Mary Lou Findley  
Foley & Lardner LLP  
Tim & Sue Frautschi  
Virginia & Mark & Gennis  
Gottlob Armbrust Family Fund  
William Stark Jones Foundation  
Leila & Joseph Hanson  
Cheryl & Roy Hauswirth  
Christine & John Hajnacki  
Maja Jurisic & Don Fraker  
Eileen Kamerick  
Susan & Donald Kerber  
Linda & William Koenig  
Pam Kriger  
Pat Lombardo  
Mr. & Mrs. Francis Matusinec  
Mr. & Ms. Guy D. McDonald  
Michael Best & Friedrich LLP  
Christine Mortensen  
Denis Murray  
Laurie Ocepek  
Jane O'Connell  
Clare M. Peters Charitable Trust  
John Peters  
Candy & Bruce Pindyck  
Robert W. Baird & Co., Inc.  
Robert W. Baird Foundation  
Ryan Rosmann  
Patricia & Charles Roy  
Carol & Kevin Schuele  
Joanne & Vincent Shiely  
Tom Schrader  
Karen Sostarich  
Audrey J. Strnad  
Joy Towell  
Vasques Family Foundation  
Cheryl & David Walker  
Lee Wolcott  
Diane & Dick Wright  
Leslie Hauser & Karl Wuesthoff  
Joseph & Maryann Zompa

## DESIGNER CIRCLE

**\$500-999**

Charles Bley  
Larry Bonney  
Rick J. Brewer  
Janet & Daniel Brophrey  
Shirley E Butzin Charitable Fund  
Allen Cain  
Dominique Delugeau  
Mary & John Emory  
Moira Fitzgerald & Peter Kammer  
Fancy Pants Pet Salon  
Rocio & Joe Froehlich  
Beth Gerlach  
Greater Milwaukee Foundation  
Burns-Schrader Family Fund  
Bill & Gwen Werner Fund  
Loyal Grinker  
Arlene Hansen  
Margarete & David Harvey  
Harold Horneffer  
Nancy Jacobs  
Diane & Richard Kane  
Michael & Maureen Klein  
Lindsey Kopps  
Larry Kreiter  
Ann Krueger  
Sandra Laedtke  
Sandra & Dale Landgren  
Barbara Jean Lee  
Justine Leonard  
Ellen Hing & Brian Leadley  
Lois Malawsky  
Lee Marquardt  
Michele Marsh  
Lori Miller  
Michelle & Michael Nast  
Monica Orr  
Barbara Peters  
Candy & Bruce Pindyck  
Melanie & Frank Popa  
Linda Gale Sampson  
Patricia Struna  
Susan & Andrew Varela  
George & Marilyn White  
Kathleen & Donald Wilson  
Dick and Diane Wright Charitable Fund

## CHOREOGRAPHER CIRCLE

**\$250-499**

Anonymous (2)  
Patsy & Richard Aster  
Jill Broekhuizen  
Jan & Dan Brophrey  
Sally & Ian Bund  
Valerie Chamberlain  
Catherine & Mario Costantini  
Moira Conzelman  
Roger Dickson



# SKYLIGHT MUSIC THEATRE CIRCLE OF DONORS

(July 1, 2022 – January 19, 2024)

Gerald & Patricia Freitag  
Foster Family Foundation  
Stanley & Janet Fox  
Elizabeth Garibaldi  
Margaret Hader  
Marcia Brooks & Edward Hammond  
Susan Hansen  
Maryeve & Rob Heath  
Susan Heymann  
Matt Honigman  
Ron Jacquart  
Jacqueline & Jeffrey Jahnke  
Pat & Ron Jodat  
Darnelle Kaishian  
Judith & William Kay  
Colleen Lese & Thomas Karakis  
Patricia & Robert Kraft  
Mr. Kenneth C. Krei  
Bernard & Judith Kristal  
Stanley Kritzik  
Charlotte Schall-Krokosky & Henry Krokosky  
Jeanne Kuelthau  
Alice Kuramoto  
Peter Lovance  
Mary Rose & Steven Marinkovich  
Melissa & Chris Marschka  
Bill & Maureen Michaels  
Debbie Prater Mitchelson & Mark Mitchelson  
Paul Stabell & James Moore  
Michael Moorhead  
Jack & Lucia Flynn Murtaugh Fund  
Jean Novy  
Janet & David Olsen  
Tracey Olson  
Molly Perillo  
SaraLynn Evenson & Derek Peru  
Cecilia Taylor & Fred Pike  
Joseph Silvers & Amy Rabideau Silvers  
James Moore & Paul Stabell  
George & Eileen Stone  
David Svejda  
Tom & Michele Tiffany  
Francesca Mayca Wegner  
Adam & Lee-Ann Wiensch  
Katrene Zelenovskiy

## Tribute Gifts

*In Honor of Hanna Buchler & Dan Janssen*  
Lee Calvey  
*In Memory of Donald R. Whitaker*  
The Estate of Donald Whitaker  
*In Memory of James Yuen*  
Joan Yuen

## In-Kind Donors

American Players Theatre  
Benson's Restaurant Group  
Roger Dickson  
Discovery World  
Door Shakespeare  
Greenfield High School  
Julia Grey  
Susan Heymann  
Kimpton Journeyman Hotel  
Valerie Johnson  
Marcus Center for the Performing Arts  
Milwaukee Art Museum  
Milwaukee Balloon Company  
Milwaukee Chamber Theatre  
Milwaukee Public Museum  
Debbie Prater Mitchelson & Mark Mitchelson  
Next Act Theatre  
Noble Catering  
Northern Sky Theatre  
Onesto  
James Ortiz  
Peninsula Players  
Punch PR  
Saint Kate Arts Hotel  
Savaglia Financial Advisors  
Walt Skipper & Irene Pilugin Skipper  
Thief Wine Shop & Bar  
Third Avenue Playworks  
Saint Kate Arts Hotel  
Savaglia Financial Advisors  
Walt Skipper & Irene Pilugin Skipper  
Thief Wine Shop & Bar  
Third Avenue Playworks  
Michael Unger  
Susan & Andrew Varela

## Matching Gift Organizations

Cybergrants  
Dominion Energy Matching Gift Program  
Fidelity Charitable  
State Farm Companies Foundation  
We Energies Foundation

## Community Partners

Historic Third Ward Association  
Visit Milwaukee

## SPECIAL THANKS

Deaf West, DM Family Fund, DJ Kurs, Jack Jason, Lisa Shriver, Marlee Matlin,  
Marquette University Theater Department, Nathaniel Unger, Stuart Ross, York Theatre Company,  
UW-Parkside Theater Department

*We make every effort to ensure that Skylight donors are recognized appropriately. If we have made an error, please accept our sincere apologies and contact the Development Team at 414.299.4974 with any correction.*

Skylight 2023-2024 Season **23**

# Saint John's On The Lake ...It's Where Mom Lives



— York Resident Ellin Levy with her daughter Jill Belconis

For more than  
155 years,  
we've been putting  
the needs of  
our residents first.

Come experience  
our Person-First  
care philosophy  
for yourself.

## The best in retirement living includes...

- ✓ A culturally respectful and intellectually stimulating community
- ✓ York – Independent Living **PLUS**
- ✓ Private Assisted Living, Rehabilitation and Memory Care Suites
- ✓ No Entrance Fee Required in York or the Health Center.

Learn more about life at Saint John's!

Call 414-831-6900



1840 N. Prospect Avenue  
414-831-6900  
[www.SaintJohnsMilw.org](http://www.SaintJohnsMilw.org)

**SAINT JOHN'S**  
ON THE LAKE

THIS PROGRAM PROVIDED BY

# ENCORE

To generate sales for your business,  
advertise in any of our premium programs.  
Call Scott for more information:

**Scott Howland**

*Sales & Marketing Director*

414.469.7779

scott.encore@att.net

- Milwaukee Repertory Theater
- Milwaukee Symphony Orchestra
- Florentine Opera Company
- Milwaukee Ballet
- Broadway at the Marcus Center
- Skylight Music Theatre
- Sharon Lynne Wilson Center



**Knight Barry**  
TITLE GROUP  
Our People. Your Success.

At Knight Barry Title, we have hundreds of experienced title and closing professionals. Our skilled staff of problem solvers is ready to provide fast, accurate services to commercial and residential customers, no matter the size of the real estate!

[WWW.KNIGHTBARRY.COM](http://WWW.KNIGHTBARRY.COM)

Knight Barry Title Inc., 201 E. Pittsburgh Ave., Suite 200, Milwaukee, WI 53204  
Wisconsin . Minnesota . Michigan . Florida . Texas

# SKYLIGHT MUSIC THEATRE STAFF

## Michael Unger Artistic Director

### ARTISTIC

Orchestra Contractor..... Michael Lorenz  
Interim Director of Artistic Operations .....  
Stephanie Staszak  
Artistic Associate ..... Alexander Coddington

### BOX OFFICE

Box Office Manager..... Kelley Art  
Box Office Supervisor .....Maureen Kailhofer,  
Rylee Zuniga  
Box Office Staff.....Anna Mikula,  
Audwin Short, Zed Waeltz, Sian Whitney,  
Deanne Walter

### DEVELOPMENT

Development Associate..... Erin Lewenauer

### EDUCATION

Education Manager..... Fred Diggins

### FACILITIES

Building Operations Technician.....  
Robert Boose

### FINANCE

Director of Finance ..... Cathy O'Loughlin  
Director of Finance ..... Stacy Tatum

### HOUSE MANAGEMENT

Lead House Manager.....Mara Grigg  
House Managers .....Oakley Mertes,  
Cat Sadler, Wesley Yaroch  
Assistant House Managers .....  
Sandi Lash, Nate Press, Alydia Stangle,  
Zed Waeltz, Dawn Wenzell

## Susan Varela Executive Director

### MARKETING

Director of Marketing and Communications  
Meghan Boyle  
IT/Database Manager.....  
Christopher Johnston

### PRODUCTION

Director of Production and Facilities.....  
Matthew Curtis  
Assistant Director of Production and  
Facilities .....Jordan Ilyssa Angelo  
Technical Director ..... Joseph Piirto  
Studio Theatre Lighting/Audio Supervisor ...  
Anthony Metz

### SCENIC

Scene Shop Supervisor/Fleet Manager .....  
Islay Reed

### PROPS

Properties Supervisor..... Simone Tegge

### LIGHTING

Lighting Supervisor..... Dovie Hughes

### COSTUMES

Costume Director ..... Jeanne Schrank  
Wardrobe Supervisor .....Carly Coldren

### SOUND

Interim Audio Supervisor ..... Steve Tonar  
Front of House Engineer .....Jack Purves

# SKYLIGHT MUSIC THEATRE BOARD OF DIRECTORS

## Valerie Johnson, PRESIDENT

Ken Dortzbach, President Elect  
Michael C. Lueder, Secretary  
Barbara Bolens, Treasurer

Chris Behling, VP of Strategic Planning  
Roger Dickson, VP of Development  
Alec Fraser, VP of Governance  
Mary McNulty, VP of Marketing

F. Tessa Escamilla Bartels  
Mary Bridges  
Moira Fitzgerald  
W. Albert Hamwright  
Robert Heath

Lindsey Kopps  
Marni King  
David Lee  
Sara Meaney  
Laura Mikeworth

Howard Miller  
Irene Pilugin Skipper  
Jeffrey M. Speller  
Herb Zien  
Colin Cabot (Honorary)

## PAST PRESIDENTS

(Chronological)

Clair Richardson  
Dale Sorden  
Allen Slichter  
George Krueck  
Timothy Frautschi  
Mary Emory  
Mary Pollock  
Jack Gardner  
Dick Wright

Byron Foster  
Nick Owen  
Sue Frautschi  
Jeff Nohl  
Asher Nichols  
Matt Flynn  
Larry Salustro  
Howard Miller  
Suzanne Hefty

Terry Kurtenbach  
John Stollenwerk  
David Harvey  
John Flanagan  
Alec Fraser  
Michael C. Lueder  
Marta Bianchini  
Brian D. Till

## ADVOCATES

### CHAIR – Laura Emory

Betty Arndt  
Carol Bayerlein  
Polly & Robert Beal  
Katherine & William Biersach  
Wendy & Richard Bliss  
Morton Blutstein  
E.J. Brumder, Jr.  
Patricia & Phillip Crump  
Thallis Drake  
Mary & John Emory  
Mary & Matthew Flynn  
Gabrielle & John Franke  
Susan & Timothy Frautschi  
Gwenn & Joseph Graboyes  
Suzanne Gromme  
Lindsay Holbrook Hammerer  
& Peter Hammerer  
Arlene Hansen  
Katie Harding & James  
Pionkoski  
Cheryl & Roy Hauswirth  
Grace McBain Haydon  
Mary Huntington  
Sharon & Ted Hutton  
Judy & Gary Jorgensen

Jeanne & Richard Kessler  
Susan & Robert Kinde  
Tracey & Richard Klein  
Kipp Koester  
Marie Kohler & Brian Mani  
Patricia & Robert Kraft  
Roz Krause  
Pam Kriger  
Konrad Kuchenbach  
Kristie & Terrance Kurtenbach  
Emilia & Christopher Layden  
Elizabeth Levins & Herbert  
Zien  
Sally Lewis  
Sally Manegold  
Rose Mary & Frank Matusinec  
Sandra & Michael McNeely  
Donna & Anthony Meyer  
Susan Nichols  
Jeff Nohl  
Jody Nolan  
Joe Nolan  
Barbara Notestein  
Jane S. O'Connell  
Candy & Bruce Pindyck  
Nancy Pinter & R. Max  
Samson

Roberta & Larry Polacheck  
Ildy & Skip Poliner  
Hattie Purtell  
Gordana & Milan Racic  
Kristine & James Rappe  
Linda & Blaine Rieke  
Lee Dougherty Ross & Jerold  
Ross  
Patricia & Charles Roy  
Richard Schilffarth  
Kathleen & Thomas Schrader  
Carol & Kevin Schuele  
Marsha Ruth Sehler  
Maureen & Larry Sherkow  
Joanne & Vincent Shiely, Jr.  
Paige Sinden  
Lisa & Paul Sweeney  
John W. Taylor  
Pauline & Calvin Verbrugge  
Anne & Tom Wamser  
Gwen & William Werner  
Nora & Jude Werra  
Kathleen & David Williams  
Richard Wright



UNITED PERFORMING ARTS FUND

A photograph of three women laughing and smiling joyfully, positioned in the upper left quadrant of the poster. The woman on the left is wearing a blue and white striped shirt. The woman in the middle is wearing a blue top. The woman on the right is wearing a light-colored top.

*If you're for*  
**FUN**

*the arts are for you.*

**AND WE'RE FOR THE ARTS!**

UPAF supports the entertainment and excitement of over 50+ diverse performing arts groups across Southeastern Wisconsin.



JOIN US AND  
DONATE TODAY AT  
[UPAF.ORG/DONATE](http://UPAF.ORG/DONATE)

