

Skylight
music theatre

**2022-2023
SEASON**



February 3-19, 2023

Great Parents Deserve a Great Community!



— York Resident Ellin Levy with her daughter Jill Belconis



SCAN ME

Scan this code with
your phone, or visit:
SaintJohnsMilw.org
for apartment tours
and to discover
many wonderful
things about life at
Saint John's
On The Lake!

The best in retirement living includes...

- A culturally respectful and intellectually stimulating community with more than 200 events to enjoy each month
- York – Enhanced Independent Living Apartments
- Private Assisted Living, Rehabilitation and Memory Care Suites
- No Entrance Fee Required.

Learn more about life at Saint John's!
Call 414-831-6900

1840 N. Prospect Avenue
414-831-6900
www.SaintJohnsMilw.org

SAINT JOHN'S
ON THE LAKE

THIS PROGRAM PROVIDED BY

ENCORE

To generate sales for your business, advertise in any of our premium programs. Call Scott for more information:

Scott Howland
Sales & Marketing Director

414.469.7779
scott.encore@att.net

- Milwaukee Repertory Theater
- Milwaukee Symphony Orchestra
- Florentine Opera Company
- Milwaukee Ballet
- Broadway at the Marcus Center
- Skylight Music Theatre
- Sharon Lynne Wilson Center



Knight | Barry
TITLE GROUP
Our People. Your Success.

With hundreds of experienced title and closing professionals and a skilled staff of problem solvers in over 80 offices in Wisconsin, Michigan, Minnesota, Florida and Texas, Knight Barry Title is ready to provide fast and accurate services to commercial and residential customers...both large and small.

WWW.KNIGHTBARRY.COM

Knight Barry Title, Inc., 201 E. Pittsburgh Ave., Suite 200, Milwaukee, WI 53204

Are Your Home & Yard in Harmony?

Design/build available year-round



David J. Frank
Landscape Contracting

Request a quote today at davidjfrank.com
Southeastern Wisconsin's premier landscaping company

THANK YOU FOR SUPPORTING US!

OUR MISSION SINCE 1959:

To bring the full spectrum of music theatre works to a wide and diverse audience in celebration of the musical and theatrical arts and their reflection of the human condition.

WE FULFILL THIS MISSION THROUGH:

- Serving as the largest employer of Wisconsin actors in the State.
- Offering educational programming that reaches over 14,000 students annually.
- Engaging more than 30,000 people at performances each year.
- Serving as a conduit for developing new musicals.
- Partnering with nationally recognized directors, designers, actors and musicians.

PLEASE CONSIDER A DONATION TO SKYLIGHT:

We sincerely appreciate a donation of any amount. Thank you for your support of Skylight Music Theatre and the arts.

Please donate at the
QR code below



ARETHA:

QUEEN OF SOUL

Capathia Jenkins

Ryan Shaw

Tickets Start at **\$30**

FRI-SAT 7:30PM | SUN 2:30PM

APR

21-23

MSO MILWAUKEE
SYMPHONY
ORCHESTRA

414.291.7605 | mso.org

Michael Unger
Artistic Director



Susan Varela
Interim Executive Director

PRESENTS



LYRICS BY
TIM RICE

MUSIC BY
ANDREW LLOYD WEBER

ORIGINALLY DIRECTED BY
Harold Prince

EVITA is presented by arrangement with Concord Theatricals
on behalf of The Really Useful Group. www.concordtheatricals.com

February 3 - 19, 2023 | CABOT THEATRE | BROADWAY THEATRE CENTER

DIRECTOR AND CHOREOGRAPHER
Gustavo Zajac***

MUSIC DIRECTOR
David Bonfiglio

SCENIC DESIGNER
Erik D. Diaz **

COSTUME DESIGNER
Kristina Sneshkoff

LIGHTING DESIGNER
Latrice Lovett

SOUND DESIGNER
Chad Parsley

PROJECTION DESIGNER
Lane Palmer

PRODUCTION STAGE MANAGER
Kate L. Ferdinandi *



* Appearing through an agreement between Skylight Music Theatre and Actors' Equity Association, the Union of Professional Actors and Stage Managers in the United States.



** The Scenic designer is represented by United Scenic Artists, Local USA-829.



*** The Director / Choreographer is a member of the Stage Directors and Choreographers Society, an independent national labor union.

Presented by Jan Serr & John Shannon
Season Sponsored by



This program is supported in part by a grant from the Wisconsin Arts Board with funds from the State of Wisconsin and the National Endowment for the Arts.

The videotaping of this production is a violation of United States copyright law and actionable federal offense.

A MESSAGE FROM THE ARTISTIC DIRECTOR, MICHAEL UNGER



This production of *Evita* opens 1,050 days late, due to a pandemic that has not quite left us. I remember the moment we walked into this beautiful theatre in March of 2020, one week before opening, to notify the cast, director, and crew assembled around several large tables that we had to shut down immediately. The company had just finished running act one and when given the choice to go home or to continue the rehearsal, they valiantly chose to run act two as a way to celebrate the work they had done together. We assumed we'd meet again before too long; but that ended up becoming after too long.

In a delay of days, turning into weeks, turning into months, turning into years, we all tried to make the best out of devastating circumstances. There was barely a glimmer of light at the end of a long, long tunnel; and we were not sure if that light was a reprieve from the darkness or a train coming straight at us.

Make the best we did, only with the help of our loyal audiences, dedicated board, marvelous staff, and the amazing artists who create the magic we have put on this stage in spite of it all. This is our eighth full production since the shutdown and it is especially rewarding because of the natural evolution of what was to be then (a concert) and what is now (a full production). We have tried to keep as many of the original cast members as possible and have added some phenomenal new additions to the family. Because of scheduling challenges, we also found a new director/choreographer who brings with him an exciting perspective.

Gustavo Zajac was born in Buenos Aires and his parents grew up under the Perónist regime. To hear him talk about his relationship to this musical is fascinating. You will certainly sense that and more as you observe his stunning and elegant direction and choreography. There are very few people who could tell this story with this level of authenticity and I am thrilled that Gustavo joins us to make this *Evita* uniquely Skylight. This is the first Andrew Lloyd Webber/Tim Rice work that has appeared at Skylight. These authors belong here because they tell epic, passionate, vital stories with intelligence, fervor, and great music. Although these two British titans of the Musical Theatre have 32 Broadway credits between them (including revivals), they are best known for collaborating on just three, biographical musicals – two biblical and this one, of nearly biblical proportions: *Jesus Christ Superstar* (Broadway, 1971), *Evita* (Broadway, 1979), and *Joseph and the Amazing Technicolor Dreamcoat* (first performed at a British prep school in 1968, although opened on Broadway in 1982).

Art can imitate life, theatre can teach history, rags can turn to riches, and historical figures can be glorified and reviled simultaneously. Biographical musicals are, perhaps, the most challenging to write because authors must balance history vs. drama. Sometimes they match up – sometimes, not. In this case, they do.

With a country and world as divisive as ours is right now, one does not have to peer too deeply into this masterpiece to see parallels to our country and world. Wherever you land on the political spectrum, we must fight for what is best. Obviously, people define “best” differently and only history and time will reveal the true answer. In the meantime, the pathway should be empathy, compassion, acceptance, and love. Some think Mrs. and Mr. Perón embodied those qualities, others vehemently disagree. Let us allow this piece to entertain us while sparking dialogue about the avenues towards humanity.

A MESSAGE FROM THE DIRECTOR/CHOREOGRAPHER, GUSTAVO ZAJAC



Evita is not just a musical about Argentina’s first lady in the 50’s. Its lyrics and music convey details on political symbolisms, forms of government, and ideologies.

As an Argentinian-born artist, I find that it is essential to portray the Perón history not as a musical fable, but as a political movement that affected and still affects the lives of millions of Argentinians today. It is my hope that the show enables American audiences to understand and translate much of its content into current political circumstances. What is there to learn from *Evita* and her legacy? Was the good in her enough to override her bad, or the other way around? What is there to be looked at in a politician? What can we learn from what history can teach us about political systems, their failures, and achievements?

Our current world is no longer divided into politics of right and left. The present scenario is one in which democracies are confronted with autocracies. Instant gratification, post reality, personalisms, and historical distortion are at the core of governments everywhere in the planet. Webber and Rice invite us to reflect on where each one of us stands on these matters. It will hopefully inspire us to live accordingly in our constant search for freedom and happiness. Here lies the message of *Evita*. One that happens to be at its most relevant of times.



WHEN YOU ARE READY TO BE

Warm & Cozy

WE ARE READY TO WELCOME YOU!

Call today to visit our beautiful
Independent Living Residences

414.639.4213

St. Camillus

A Life Plan Community

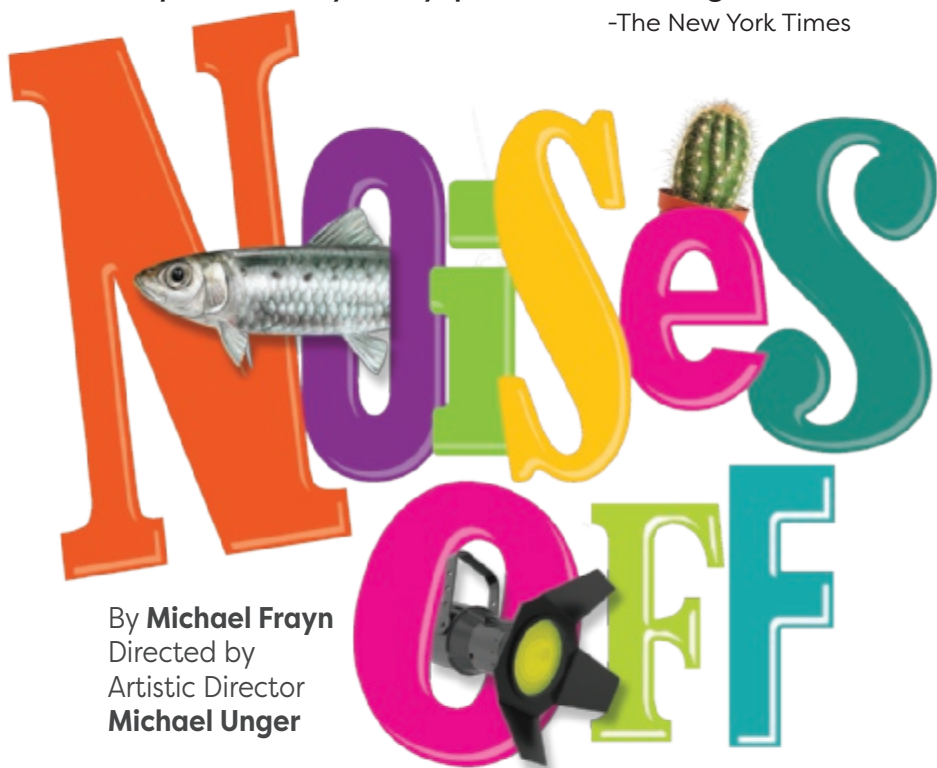
COMING UP AT

Skylight
music theatre

"A spectacularly funny, peerless backstage farce."

-The New York Times

Noises Off

The title 'Noises Off' is rendered in large, colorful, 3D block letters. The letters are orange, purple, green, yellow, pink, and teal. A small silver fish is positioned inside the purple letter 'i', and a small green cactus in a brown pot sits on top of the pink letter 'e'. The word 'Off' is in a different color, teal, and is positioned below 'Noises'.

By **Michael Frayn**
Directed by
Artistic Director
Michael Unger

March 17 – April 2, 2023

With music by **Combustible Edison**

Skylight presents one of the most hilarious plays ever written – and adds music! This hit, side-splitting backstage farce will have live accompaniment by a singer and band playing songs by the cocktail lounge-inspired, 1950s groove of Combustible Edison. Sparkling tunes and showbiz shenanigans create a first-of-its-kind production on Skylight's stage.

Recommended for ages 10 and up

Noises Off is presented by arrangement with Concord Theatricals on behalf of Samuel French, Inc. www.concordtheatricals.com

(414) 291-7800 • www.skylightmusictheatre.org

158 N. Broadway
in Milwaukee's Historic Third Ward

TICKETS
START AT
\$40!

CAST

(in order of singing)

Che	Richard Bermudez*
Eva Perón.....	Rána Roman *
Magaldi	Christian Feliciano
Juan Perón	Andrew Varela*
Perón's Mistress.....	Ashley Rodriguez
Tango Dancer.....	Guillermina Quiroga
Tango Dancer.....	Mariano Logiudice
Young Performers	Lucia Harris, Emily Honigman
Ensemble.....	Gabriel Burdette, Alexis Cimoch, Kaleigh Rae Gamache, King Hang, Adam Qutaishat, Sarah Zapiain

* Denotes member of Actors' Equity Association

Understudies-Gabriel Burdette: Magaldi, Alexis Cimoch: Perón's Mistress,
Christian Feliciano: Che, King Hang: Juan Perón, Sarah Zapiain: Eva Perón

Dance Captain	Christian Feliciano
---------------------	---------------------

BAND

Music Director/Keyboard 1	David Bonofiglio
Keyboard 2.....	Kurt Cowling
Violin	Pamela Simmons
Cello	Scott Cook
Reeds	Jon Lovas
Trumpet	Greg Garcia
Guitar	Steve Lewandowski
Bass	Michael Ritter
Drums and Percussion.....	Michael (Ding) Lorenz

PRODUCTION SUPPORT

Associate Choreographer	Guillermina Quiroga
Assistant to the Director	Marion Frank
Scenic Artists.....	Catherine Lottes, Annabelle Leiberg, Justin Roberts
Scenic Carpenters.....	Christopher Kurtz, Madeline Elise
Properties Supervisor	Simone Tegge
Stitchers	Marsha Kuligowski, Jessica Jaeger, Jamie Mercado, Jeanne Schrank
Electricians.....	Jessica Baker, Lizzie Oppermann, Valerie Bausch, Madie Elise, Rollie Layman
Assistant Stage Managers	Samantha Pikelnick, Devon Wiensch
Wig and Hair Designer.....	David Roman
Wardrobe.....	Lisa Quinn, Samantha Sostarich
Deck Crew	Tony Roman, Jordan Angelo
Light Board Operator	Zoey Lucas
Sound Engineer/Projection Operator	Lane Palmer
Followspot Operators	Lizzy Opperman, Olivia Bastien
Graphic Design Support	Robert “Bebo” Nelson
Photographer	Mark Frohna

Special Thanks to Studio Gear, Christine Spencer

UW Stevens Point, Northern Kentucky University, Milwaukee Ballet

PRODUCTION STAFF

Technical Director	Leo Haselhorst
Assistant Technical Director.....	Taylor Adams
Scene Shop Supervisor	Tony Roman
Carpenter	Drea DV
Costume Director	Shima Orans
Costume Shop Manager	Barry Link
Wardrobe Supervisor	Carly Coldren
Lighting Supervisor	Rafael Vasquez
Assistant Lighting Supervisor	Anna Janicek
Audio Supervisor.....	Kelsea Sexton
Assistant Audio Supervisor	Lane Palmer
Properties Supervisor	Simone Tegge
Lead Props Artisan	Yvonne Tessman

MUSICAL NUMBERS

Act 1

A Cinema in Buenos Aires, 26 July 1952.....	Ensemble
Requiem for Evita	Ensemble
Oh What a Circus	Che and Ensemble
On This Night of a Thousand Stars	Magaldi
Eva and Magaldi / Eva, Beware of the City	Eva, Magaldi, Che and Evita's Family
Buenos Aires.....	Eva, Che and Ensemble
Goodnight and Thank You	Che, Eva, Magaldi and Lovers
The Lady's Got Potential	Che
The Art of the Possible.....	Perón, Generals and Eva
Charity Concert	Perón, Che, Magaldi and Eva
I'd Be Surprisingly Good for You	Eva and Perón
Hello and Goodbye.....	Eva
Another Suitcase in Another Hall	Perón's Mistress and Men's Chorus
Perón's Latest Flame	Che, Aristocrats, Soldiers and Eva
A New Argentina	Eva, Che, Perón and Ensemble

Act 2

Entr'acte

On the Balcony of the Casa Rosada	Perón, Che and Ensemble
Don't Cry for Me Argentina.....	Eva
High Flying, Adored.....	Che and Eva
Rainbow High	Eva and Dressers
Rainbow Tour	Perón, Advisers and Che
The Actress Hasn't Learned the Lines	Eva, Aristocrats and Che
And the Money Kept Rolling In	Che and Ensemble
Santa Evita	Children and Chorus
A Waltz for Eva and Che	Eva and Che
You Must Love Me	Eva
Perón's Latest Flame Playoff	Soldiers
She Is a Diamond.....	Perón
Dice Are Rolling / Eva's Sonnet	Perón and Eva
Eva's Final Broadcast.....	Eva and Che
Montage	Eva, Che, Perón, Magaldi and Chorus
Lament	Eva, Embalmers and Che

Coming
spring of 2024!

Signature Living Awaits



Cedar Community announces a new definition of distinction for adults 55 and better—***The Lofts at Cedar Lake***. Maintenance-free, private independent residences ranging in size from 1,100 to 2,000 square feet.

Located on Cedar Community's 245-acre wooded campus, The Lofts, offer lake country living within minutes of shopping, fine dining, entertainment, cultural events, an award-winning farmer's market, ***and so much more!***

The Lofts at Cedar Lake are nestled in the natural beauty of the Kettle Moraine—surrounded by lakes and prairies, hiking trails, and forests—all providing a picturesque landscape. Every detail, design, and interior finish is selected to provide comfort, peace, and spaciousness.

*Preconstruction benefits are
available for a limited time only!*

**Be the first to discover lake living at
its finest by scheduling a tour today.**

Cathy
262.338.4615

Abby
262.338.4617

Amenities included:

- Outdoor green space, trails, and lake access
- Spacious design and wooded views
- Exercise atrium
- Lounge and gathering spaces
- Pet friendly
- Secure, private storage
- Indoor parking garages



Renderings provided by EUA

cedar 
community

West Bend, WI | cedarcommunity.org

Trust Your Health to One of Milwaukee's Most Respected Medical Practices.

It's important to choose a physician who will listen closely to your needs and respond genuinely to your concerns. Fortunately for you and your family, our physicians have been providing exceptional care in Milwaukee and Ozaukee for over 100 years.

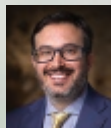
INTERNAL MEDICINE



Kathleen Baugrud, M.D.



John Betz, M.D.



Avi Bernstein, M.D.



Matthew Connolly, M.D.



Kevin DiNapoli, M.D.



Deidre Faust, M.D.



Scott Jorgensen, M.D.



Unchu Ko, M.D.



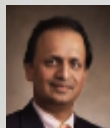
David Lucke, M.D.



Rachel Osterbaan, M.D.



John Sanidas, M.D.



Abraham Varghese, M.D.



James Volberding, M.D.



Dima Adil, M.D.



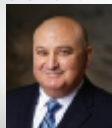
Jay Balachandran, M.D.



Burak Gurses, M.D.

PULMONARY

GASTROENTEROLOGY



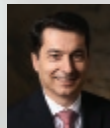
Abdullah Fayyad, M.D.



Vijay Khiani, M.D.



Gene Klugman, M.D.



Venelin Kounov, M.D.



Srihari Ramanujam, M.D.



Chad Stepke, M.D.

ALLERGY & IMMUNOLOGY

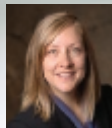


Anne Lent, M.D.



Kristin Schroeder, M.D.

ENDOCRINOLOGY



Amy DeGueme, M.D.



Elaine Drobny, M.D.



Antoni Gofron, M.D.



Usonwanne Ibekwe, M.D.



Brent Jones, M.D.



Kawaljeet Kaur, M.D.

MADISON MEDICAL AFFILIATES



MADISON MEDICAL

MILWAUKEE • MEQUON

MadisonMedical.com | 414.272.8950

SURGERY



Richard Catley, M.D.



Jasna Coralic, M.D.



Alyandra Lai, M.D.



Joseph Regan, M.D.



Craig Siverhus, M.D.



Carmen Balding, M.D.



Camille Hoxsel, M.D.

UROLOGY



Kevin Gee, M.D.



Christopher Kearns, M.D.



Jonathan Berkoff, M.D.



Kalya Frantskevich, M.D.



Shireen Jayne, D.O.



Jennifer Morales, M.D.



Nicolette Deveneau, M.D.

OBSTETRICS & GYNECOLOGY

DERMATOLOGY



Amanda Cooper, M.D.



Tracy Donahue, M.D.



Valerie Lyon, M.D.



Jack Maloney, M.D.



Jason Rosenberg, M.D.



Debra Scarlett, M.D.

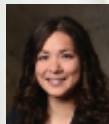


Thorsteinn Skulason, M.D.



Heather Wells, M.D.

COMPREHENSIVE EYE CARE



Lisa Bennett, M.D.



Alwin Edakkunnathu, O.D.



James Iwanoski, O.D.

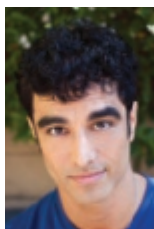


Joseph Zilisch, M.D.

MOHS SURGERY

Visit MadisonMedical.com
to learn more about our doctors
and their specialties.

CAST / WHO'S WHO IN THE CAST



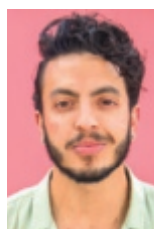
**Richard
Bermudez**



**Gabriel
Burdette**



Alexis Cimoch



**Christian
Feliciano**



**Kaleigh Rae
Gamache**



King Hang



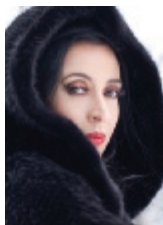
Lucia Harris



**Emily
Honigman**



**Mariano
Logiudice**



**Guillermina
Quiroga**



**Adam
Qutaishat**



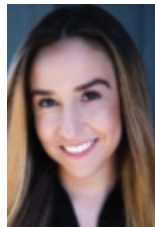
**Ashley
Rodriguez**



Rána Roman



Andrew Varela



Sarah Zapiain

Richard Bermudez (Che) is making his Skylight debut having previously performed Che for Musical Theater West opposite Davis Gaines and most recently for Drury Lane Productions (Joseph Jefferson Award winner). Other credits include Giorgio in *Passion* (Boston Court), Tarzan in *Tarzan the Musical* (Performance Riverside), Valentin in *Kiss of the Spiderwoman* (Welk Resort, Craig Noel Award winner), The Stoker in *Titanic*, Radames in *Aida*, Marius in *Les Misérables* (Moonlight Amphitheater), and Judas in *Jesus Christ Superstar* (Candlelight Pavilion).

Gabriel Burdette (Ensemble, ECP) has been seen in shows throughout Wisconsin such as *Hair*, *Urinetown*, *Little Women*, and most recently as Crutchie in *Newsies* at Sunset Playhouse. When not on stage he can be caught behind the sewing machine, fixing it, being a costume connoisseur, or altering clothes for his family. As a Milwaukee native, Gabriel is overjoyed to be a part of Skylight's Early Career Professional Internship Program and can't wait to make his Skylight debut!

Alexis Cimoch (Ensemble, ECP) is thrilled to be part of the Early Career Professional program and make her Skylight debut! Alexis holds a BA in musical theatre from the University of Wisconsin - La Crosse. Favorite university credits include Amy March in *Little Women*, Hope Cladwell in *Urinetown*, Jenny Hill in *Big Fish* and Lana Sherwood in *War of the Worlds*. Special thanks to family and friends for their constant love and support. Instagram: @alexiscimoch

Christian Feliciano (Magaldi) is a proud Boricua making his Skylight Music Theatre debut. Regional credits include Roy in *A Chorus Line* at Stages St. Louis, Snoring Man in *White Christmas* at Fireside Theatre, Juan in *Man of La Mancha* at Porthouse Theatre, and George in *Sunday in the Park with George* at Cohen Theatre. Many thanks to his agents at Clear Talent Group. Much love to Sett and his family. @christian.felic

Kaleigh Rae Gamache (Ensemble) has been performing on international stages while traveling as a widely published photographer. She's been seen as Queen of the Night in Mozart's *Die Zauberflöte* with BARE Opera and Manhattan Opera Studio, in roles of Somtow Sucharitkul's *Das Jati* world premiere operas in Bangkok, Thailand with Opera Siam, and the one-woman monodrama in the title role in *The Diary of Anne Frank* by Grigori Frid also with Opera Siam. Other notable performances

include the Maid in Thomas Adès' *Powder Her Face* with Skylight Music Theatre and Cunegonde in *Candide* with Third Avenue Playhouse. She received her BFA in Opera/Vocal Performance and Minor in German from the University of Wisconsin-Milwaukee, and received her Zertifikat in Germany at the Folkwang Universität der Künste.

King Hang (Ensemble/ECP) is ecstatic to be a part of the Early Career Professionals program with Skylight. A recent graduate of the University of Wisconsin-Parkside, King is a proud Milwaukee resident. Recent credits include *A Jolly Holiday* at Skylight Music Theatre, *Much Ado About Nothing* (Claudio) with Summit Players Theatre, *The Mole Hill Stories* (Moon) and *Freaky Friday* (Louis) with Children's Theatre of Madison, *Macbeth* (Banquo) with Sunstone Studios, and *Miracle on 34th Street* (Wallace) with Forte Theatre Company.

Lucia Harris (Young Performer) is honored to be making her Skylight Music Theater debut in *Evita*. She has previously appeared in four productions at First Stage, most recently as Rudolph in *Rudolph The Red-Nosed Reindeer The Musical*. She also plays ukulele, guitar and volleyball and enjoys hanging out with friends and family.

Emily Honigman (Young Performer) is so grateful to make her Skylight debut! She is 11 years old and a sixth grader at Whitefish Bay Middle School. Emily recently appeared in *Rudolph the Red-Nosed Reindeer* at First Stage (Clarice). Offstage, she enjoys playing violin with MYSO, writing, soccer, and spending time with family and friends.

Mariano Logiudice (Tango Dancer) performed in New York City Center's *Evita* as a tango soloist and featured couple, and at Carnegie Hall and Lincoln Center in New York. He was in *Tango of the Americas* at Washington DC's Kennedy Center with the Pan American Symphony Orchestra, and at Rochester's Kodak Theatre with the Philharmonic Orchestra. He danced with *Tango Argentino* at the 2021 closing ceremonies of the World Tango championship in Buenos Aires and has participated in numerous tango festivals around the world.

Guillermina Quiroga (Tango Dancer/ Associate Choreographer) was chosen by *The New York Times* in the *Best Dance of 2015*. She is renowned for appearances in *Tango Argentino* and *Forever Tango* on Broadway;

World Tango tour with Julio Iglesias; her own *Tango, Historias Breves*; *Tango Magic* at Carnegie Hall; and *Evita* at NY City Center. Her choreography includes “Libertango” for Olympic gold medalists Grishuk-Platov, and the finale of *Forever Tango* (Tony nomination). She appeared in the movies *Valentina’s Tango* and *12 Tangos*.

Adam Qutaishat (Ensemble) is a Milwaukee-based theatre artist. Previous Skylight credits include ensemble in *Carmina Burana*, and as Richard Dauntless in *Ruddigore*. Acting highlights include work with Milwaukee Rep, Milwaukee Chamber Theatre, The House Theatre, Renaissance Theaterworks, Milwaukee Opera Theatre, Next Act Theatre, and Theo Ubique. Adam also serves as Associate Artistic Director for Music Theatre of Madison, Artistic Associate for All In Productions, and as the creator of audio fiction podcast company Button Podcasts. adamqutaishat.com

Ashley Rodriguez (Perón’s Mistress) was last seen at Skylight as Hattie in *Kiss Me, Kate*. She recently performed various roles in Renaissance Theaterworks’ *Best of Brink Briefs*. She returned to her former college, the College of Lake County, as a guest artist portraying the Witch in *Into the Woods*.

Rána Roman (Eva Perón) is a Milwaukee native whose previous Skylight credits include Lilli/Kate in *Kiss Me, Kate*, Yum-Yum in *Hot Mikado* and Nina in *In the Heights*. Most recently, Rána was seen at the Milwaukee Rep, as Mrs. Cratchit in *A Christmas Carol*, at Milwaukee Chamber Theatre in *Mala*, at First Stage Theater, as Mami in *On the Wings of a Mariposa*, and at Forward Theater of Madison, as Ella in *Life Sucks*.

Andrew Varela (Juan Perón) has been seen on Broadway and in National Tours of *Les Misérables* (Jean Valjean, Javert) *Phantom of the Opera* (The Phantom), *Little Women* (Prof. Bhaer), Roundabout’s *Sunday in the Park with George* (Jules); *South Pacific* in concert at Carnegie Hall. Skylight credits include *Sweeney Todd* (Sweeney), *Les Misérables* (Javert), *Wizard of Oz* (Lion), *The Pirates of Penzance* (Pirate King), *Annie* (Warbucks) and *Kiss Me, Kate* (Fred). Other Milwaukee credits include Milwaukee Repertory Theater’s *Guys and Dolls* (Big Jule) and *Titanic* (Ismay). For Susan.

Sarah Zapiain (Ensemble, ECP) is a Milwaukee based performer and director with a BA in Theatre from Franciscan University of Steubenville. Additionally, Sarah has trained with Shakespeare & Company and British-American Drama Academy. She recently appeared in *The Sound of Music* (Maria) and *Little Women the Musical* (Jo March) with Forte Theatre. Other credits include Maria in *The*

Tamer (Suntone Studios), and The Porter/Witch #2 in *Macbeth* (Voices Found Repertory) and Louise in *Gypsy* (The Snug Theatre).

CREATIVE TEAM BIOGRAPHIES

Gustavo Zajac (Director and Choreographer) was most recently Director and Choreographer for *Guys and Dolls* at Arkansas Rep and Choreographer for *Carmen* at New York City’s Lincoln Center. On Broadway he was Associate Choreographer for the Tony Award-winning revival of *Nine* with Antonio Banderas and Chita Rivera, and Associate Choreographer for *Fiddler on the Roof* starring Alfred Molina. He choreographed *Evita* at Repertory Theater of St. Louis, and *Pirates of Penzance* at City Center. In Asia, he directed *Yerma*, *Blood Wedding*, *Bernarda Alba*, *Fiddler on the Roof*, *Barnum*, and *Cyrano*. In Buenos Aires, his hometown, he directed *An Act of God*, *Fiddler on the Roof*, *Victor Victoria*, and *Man of La Mancha*, among others. <http://www.gustavozajac.com>

David Bonofiglio (Music Director) holds a BFA in piano performance from Cardinal Stritch University. Selected credits as musical director: *Mamma Mia!*, *The Full Monty*, *Little Shop of Horrors*, *The 25th Annual Putnam County Spelling Bee*, *Oklahoma*, *Urinetown*, and *Pippin* for Skylight Music Theatre; *Little By Little*, *Scrooge In Rouge*, *A Cudahy Caroler Christmas*, and *Jesus Christ Superstar* for In Tandem Theatre; *Sunday In The Park With George* for Windfall Theatre. As assistant musical director: *A Christmas Carol* for Milwaukee Repertory Theatre.

Erik D. Diaz (Scenic Designer) is excited to return to Skylight for *Evita*. He is the Director of Technical Theatre and Design at the Noble and Greenough School. Regional credits: *Chicken & Biscuits* (FrontPorchArts), *Peter and the Star Catcher* (POTS), *Between Riverside and Crazy* – IRNE Winner, (SpeakEasy), *Guys and Dolls* (NSMT), *Heisenberg* (TheatreWorks C.S.), *Mary Poppins* (CSFAC). TV: HGTV’s *Designed to Sell*, CBS–WBZTV Boston. Proud member USA Local829. Love to Holly, Ezra and Zander. www.DESIGNBYDIAZ.com

Kristina Sneshkoff (Costume Designer)A designer and educator by trade, her regional design credits include Cincinnati Shakespeare Company, Skylight Music Theatre, Children’s Theater of Madison, FirstStage, Forward Theater Co., Renaissance Theaterworks, Milwaukee Chamber Theatre, McLeod Summer Playhouse, Ivoryton Playhouse, Shakespeare Theatre of New Jersey, Barrington Stage Co, Two River Theatre Co., Seaside REP, Florida Studio Theatre, Asolo REP, Opera New Jersey, Ballet Nouveau Colorado. Previous faculty positions at UW-

Stevens Point, Rutgers University, Princeton University, Western CT State University, North Park University. www.kristinasneshkoff.com

Latrice Lovett (Lighting Designer) (M.F.A. UMKC, B.A. NCCU) resides in the triad area of North Carolina. She designs lighting for theatre and live entertainment. She's also been working with different companies on her project L.I.T. (Lighting in Theatre), where she teaches the basics of lighting/minimal designs. Other Credits: *Stick Fly* (The Playmakers Repertory); *The Mountaintop* (Heritage Theatre Festival), *Five Guys Named Moe* (Skylight Music Theatre), *Jitney* (Pittsburgh Playwrights).

Chad Parsley (Sound Designer) is a Chicago based Sound Designer who is delighted to return to Skylight after designing sound for *Hunchback of Notre Dame*. Other designs include *The Book of Mormon* (Networks Entertainment), *Jersey Boys* (Norwegian Cruise Lines), *Emma* (Chicago Shakespeare Theater), *Joseph and ...* (Dallas Theater Center), *The Wiz* (Dallas Theater Center). Chad has spent the last 25 years working in the sound departments of *Hamilton: An American Musical*, *The Book of Mormon*, *SIX*, and many more.

Lane Palmer (Projections Designer/Assistant Audio Supervisor) makes their regional theatre design debut with *Evita!* In addition to audio, they are also a lighting and video technician. Lane is Skylight's main operator for the audio board and can be seen in the Dress Circle running it during most shows. Lane would like to thank their partner, Annabelle, for all of her support and encouragement. Enjoy the show!

Kate L. Ferdinandi (Production Stage Manager) is elated to be a part of the team at Skylight! Regionally, Kate has worked at theatres from Colorado to Rhode Island (her home state), and many places in between, since 2008. Favorite productions have included *The Bridges of Madison County* (Colorado Springs FAC), *Fiddler on the Roof* (Pennsylvania Shakespeare Festival), *Mamma Mia!* (Theatre By The Sea), and *White Christmas* at Ocean State Theatre Company. Thanks to mom for the roots and wings! Proud AEA member.

Susan Varela (Interim Executive Director) Originally from Milwaukee and a graduate of UW-Stevens Point, her professional career as a performer has taken her from the Broadway stage (*Les Miserables*) to the Skylight stage (*Les Miserables*, *Into the Woods*, *Wizard of Oz*, *Sweeney Todd*). She has performed at the Denver Center Theatre (Tony Award winning season) and the Yale Repertory Theatre, among others. She has been Skylight's Director of Artistic Operations since 2019. 30 year member of AEA.

Michael Unger (Artistic Director) For Skylight, Michael has directed Dennis DeYoung's *The Hunchback of Notre Dame*, *Little Shop of Horrors* and *A Jolly Holiday* before that, amongst many virtual offerings, he directed the Broadway World Award-winning *Being Earnest*, now available worldwide online. He was previously Associate Artistic Director of Off-Broadway's York Theatre, credits included *You're A Good Man Charlie Brown* and *Big*. For nine years, he was the Producing Artistic Director of NewArts, started with a local father in response to the Sandy Hook Elementary School tragedy; directing 17 productions working with over 650 area-children. Other selected directing credits include *A Christmas Carol* (McCarter Theatre for 18 years), *Two Point Oh* (NY Times Critics' Pick), *Time Stands Still* (Cape Cod Chronicle Best 2015), *My Sister in This House* (Deaf West, Ovation Recommended), and new versions of *The Happy Time* and *The Rink*. World premieres include *The 25th Annual Putnam County Spelling Bee*, *Caligula*, and *A ROCKIN' Midsummer Night's Dream* (featured in the award-winning documentary film "Midsummer in Newtown"). He has directed 14 operas plus benefit concerts honoring Susan Stroman, André DeShields, Maltby and Shire, and Leslie Uggams, as well as for the communities of Sandy Hook, CT and Parkland, FL.

Marion Frank (Assistant to the Director, ECP) is proud to pioneer the Directing ECP position for Skylight's 22-23 season! Marion recently graduated from Knox College with a major in Theatre and minors in German and Dance. Directing credits include *The Violent Outburst That Drew Me To You*, *Let Me Hear You Whisper*, and *Machinal*, which she conducted as her undergraduate Honors Thesis project. She looks forward to learning more from Skylight's theatre artists this year.

Tim Rice (Lyricist) has worked in music, theatre and films since 1965 when he met Andrew Lloyd Webber, a fellow struggling songwriter. Their works together include *Joseph and the Amazing Technicolor Dreamcoat*, *Jesus Christ Superstar* and *Evita*. Tim has since worked with other distinguished popular composers such as Elton John (*The Lion King*, *Aida*), Alan Menken (*Aladdin*, *King David*, *Beauty and the Beast*), Bjorn Ulvaeus and Benny Andersson (*Chess*), and Stuart Brayson (*From Here to Eternity*). He has also written with Freddie Mercury, Burt Bacharach and Rick Wakeman among others. As an EGOT, he is one of only 17 people in the world to have won an Emmy, Grammy, Oscar and Tony award. He was knighted by HM Queen Elizabeth II in 1994.

Andrew Lloyd Webber (Composer) has composed the scores of some of the world's most famous musicals. From *Joseph and the Amazing Technicolor Dreamcoat* (1969) to *Bad Cinderella* (2022), his work has been consistently seen on world stages. When *Sunset Boulevard* joined *School Of Rock*, *CATS* and *The Phantom Of the Opera*, he equaled Rodgers & Hammerstein's record of four shows running simultaneously on Broadway. He is one of the select group of artists with EGOT status, having received Emmy, Grammy, Oscar and Tony Awards. **Actors' Equity Association** ("Equity"), founded in 1913, is the U.S. labor union that represents more than 50,000 actors and stage managers. Equity seeks to foster the art of live theatre as an essential component of society and advances the careers of its members by negotiating wages, working conditions and providing a wide range of benefits, including health and pension plans. Actors' Equity is a member of the AFL-CIO and is affiliated with FIA, an international organization of performing arts unions. #EquityWorks



Waukesha
CIVIC
THEATRE

www.waukeshacivictheatre.org

Performances
March 10 through 26

How Your Support Helps Skylight Music Theatre



\$25

Classroom Supplies for **KidsWrites**



\$50

Amtrak travel for an artist to join Skylight from Chicago



\$250

Provides a free live performance of KidsWrites or Skylight Songbook to an MPS school



\$500

Lumber for building a set



\$1000

Guest Teaching Artist for Music Theatre Residency

Donor Benefits Include Behind the Curtain



Behind the Curtain gives you access to Skylight like you've never had before.

Sit in on rehearsals, work with us backstage, and join us on stage as we take you through the creative process of putting together a Skylight show.

Start your Behind the Curtain experience with an annual donation of \$500, and unlock additional tiers at higher amounts.



Join us for a Select First Rehearsal
\$500 - \$749



Invitation to Final Dress Rehearsal
\$1,500 - \$2,499



Take a Complete Behind the Scenes Tour
\$750 - \$1,249



Become an Honorary Crew Member
\$2,500 - \$4,999



Invitation for Two to All 2023-24 Sitzprobes
\$1,250 - \$1,499



Dinner and a Show with the Artistic Team
\$5,000+

More information on our website www.skylightmusictheatre.org

Donate to
Skylight
music theatre
Today!

Contact our development department for more information!
development@skylightmusictheatre.org
414-291-7800





STAR QUALITY

*Althea's
Fine Lingerie*

777 North Jefferson Street
AltheasFineLingerie.com




ABOUT THE CABOT THEATRE

Skylight's mainstage home is the Cabot Theatre in the Broadway Theatre Center, which was built by Skylight in 1992 in Milwaukee's Historic Third Ward. Considered to be one of Milwaukee's most beautiful theatres, the Cabot Theatre is based on the design of an 18th-century French opera house. With just 350 seats it offers audiences great views of the action onstage.

The people and cupids painted on the ceiling represent various important players in Skylight history and landmarks from the Milwaukee skyline as it appeared in 1992 when the Cabot Theatre and Broadway Theatre Center were built.

The design features the Goddess of Memory: Mnemosyne, mother of the Nine Muses. Each of the nine boxes on the Gallery level celebrates one of the Muses: History, Tragedy, Comedy, Literature, Science, Oratory, Poetry, Dance and Music. In a nod to the spirit of fun that makes up Skylight's DNA, playful images are part of the decorations for each muse. Can you spot the bag of cough drops for one of them?

Skylight
music theatre

SKYLIGHT MUSIC CIRCLE OF DONORS

Skylight Gratefully acknowledges the following individuals, foundations, organization, businesses and government agencies who provided support within the last year and helped us to deliver the high quality music theatre productions to the greater Milwaukee community. Our thanks to the many donors below \$250 whose gifts are vital to Skylight's continuing success; we regret there is not space to list them all. Please refer to our website for a complete listing. This list contains donors from the current Fiscal Year January 2023.

Skylight Music Theatre acknowledges and thanks the **United Performing Arts Fund**, our single largest donor, for its generous annual support.

Richardson Circle - \$ 400,000+

United Performing Arts Fund

Benefactor Circle - \$25,000 - \$399,999

Anonymous

The Lynde & Harry Bradley Foundation

The Estate of Donald Whitaker

Herzfeld Foundation

The High Road Publishers LLC

Jan Serr & John Shannon

Star Circle - \$10,000-\$24,999

Daniel M. Soref Charitable fund

Laura & John Emory, Jr.

Virgilee Krueck

Quarles & Brady LLP

Vicki Reiss

Walt Skipper & Irene Pilugin Skipper

Wisconsin Arts Board

Wispact Foundation

Herb Zien & Liz Levins

Sponsor Circle \$5,000-\$9,999

Barb & Mark Bolens

Bonnie & Barry Behnken Family Charitable Fund

Ken Dortzbach & Jennie Kent

John Florance

Kristin & Alec Fraser

Ralph G. or Cherie Gorenstein

Charitable Foundation

Greater Milwaukee Foundation

Asher & Susan Nichols Family Fund

Brent Killackey & Judy Williams-Killackey

Krause Family Foundation

Terrance & Kristie Kurtenbach

Howard & Sara Miller

Valerie Johnson

We Energies Foundation

Brian & Laurie Winters

Richard & Kay Yuspeh

Producer Circle \$2,500-\$4,999

Associated Bank

Baird Anonymous

Bob Balderson

Greater Milwaukee Foundation

Barbara Brumder Buzard Fund

Margaret Heminway Wells Fund

Luedke-Smith Fund

Timothy Hansen

Keith Herenda

Judy & Gary Jorgensen

Mike & Tonya Lueder

KeleMarie Lyons

John Mason

Tim Mikeworth

Northwestern Mutual

Marcia Richards & Donald Whitaker

Blaine & Linda Rieke

Sempercor Foundation

Shirley Butzin Charitable Fund

Sikich LLP

Gloria Tracy

Michael Unger

Director Circle \$1,000-\$2,499

Donald & Barbara Abert Fund

Anonymous

F. Tessa & Richard Bartels

Polly & Robert Beal

Chris Behling

Four-Four Foundation, Inc.

Jeffrey Bono

Briggs & Stratton Corporate Foundation, Inc

The Brownstone LLC

Brian J. Casey

Margaret & B. Lauren Charous

Cream City Foundation

Jane & William Crise

Jim & Karen D'Ambrisi

Roger Dickson & Linda Cesario

T. Arthur & Rhonda Downey

Greater Milwaukee Foundation

Dr. Carl W. Eberbach & Elisabeth

Falk Eberbach Fund

Steve & Buffy Duback

Richard & Patricia Ehlert

Giacomo Fallucca

Mary Lou Findley

Moira Fitzgerald & Peter Kammer

Foley & Lardner LLP

Tim & Sue Frautschi

Gottlob Armbrust Family Fund

Joe & Gwenn Graboyes

Bill & Sandy Haack

Lorrie & Scott Heins

Amy S. Jensen

William Stark Jones Foundation

SKYLIGHT MUSIC CIRCLE OF DONORS

Eileen Kamerick
Susan & Donald Kerber
Pam Kriger
Mike Laska
Jack R. & Beverly Lemmon
Franklin Loo & Sally Long
Dawne & Ray Manista
Mary Kayser Memorial Fund
Guy & Mary Jo McDonald
Mary McNulty
Genie & David Meissner
Laura Mikeworth
Milwaukee Arts Board
Mr. Denis Murray
Kimberly Nistler
Laurie Ocepek
Larry & Bonnie Paplham
Clare M. Peters Charitable Trust
Quality Air Heating & Cooling LLC
Ryan & Amanda Rosmann
Charles & Patricia Roy
Ryan & Karin Savage
Carol & Kevin Schuele
William & Sarah Slaughter
State Farm Companies Foundation
David & Cheryl Walker
Sue E. Wells
Lee Wolcott
Joseph & Maryann Zompa

Designer Circle - \$500-\$999

Baird Foundation
George Banda
Carolee Beutler
Lawrence Bialcik
Ross & Diane Bjella
William & Barbara Boles
Janet & Daniel Brophey
Burns-Schrader Family Fund
Allen Cain
Ed & Jill DeFrance
Mr. Dominique Delugeau
Dr. Karin & Dr. Peter Drescher
Don Fraker & Maja Jurisic
Rocio & Joe Froehlich
Mark Frohna
Annie & Joseph Gehrke
Mark & Virginia Gennis
Grammy B's Cookies
Greater Milwaukee Foundation
Burns-Schrader Family Fund
Loyal Grinker
Arlene Hansen
Leila & Joseph Hanson
David & Margaret Harvey
Cheryl & Roy Hauswirth
Rob & Maryeve Heath
Nancy Jacobs
Ron Jacquart
Kane Communications Group

Robert & Susan Kinde
Larry Kreiter
Konrad Kuchenbach
Sandra Laedtke
Dale & Sandra Landgren
Justine Leonard
Pat Lombardo
Loyal D Grinker
Francis & Rose Mary Matusinec
Mrs. Lori Miller
Christine Mortensen
Michelle & Michael Nast
Jane O'Connell
Monica Orr
Susan Peterson
Candy & Bruce Pindyck
Frank & Melanie Popa
Linda Gale Sampson
Dan Schley & Barb Haig
Mr. Tom Schrader
Karen Sostarich
James Moore & Paul Stabell
Audrey J. Strnad
Patricia Struna
Kathleen & Donald Wilson
Dick & Diane Wright Charitable Fund
Leslie Hauser & Karl Wuesthoff

Choreographers Circle - \$250-\$499

Elma Anderson & James Aasen
Anonymous
Richard & Patsy Aster
Danielle Baerwald
Katherine Banzhaf
Marta & Marc Bianchini
Rick J. Brewer
Rachael Brodd
Jill Broekhuizen
Marcia Brooks & Edward Hammond
Johanna Buchler
Sally & Ian Bund
Glenn Cain
Mark & Lynne Carlstein
Moira Conzelman
SaraLynn Evenson & Derek Peru
Foster Family Foundation
Stanley & Janet Fox
Ms. Pamela Frautschi
Elizabeth Garibaldi
Kathleen Geiger
Dianna Dentino & John Gielow
Greater Milwaukee Foundation
Jack & Lucia Flynn Murtaugh Fund
Margaret Hader
Jeffrey Harwell
Edward Hediger
Vicky Hediger
Harold Horneffer
Jacqueline & Jeffrey Jahnke
Daniel Janssen

SKYLIGHT MUSIC CIRCLE OF DONORS

Ron & Pat Jodat
Richard & Diane Kane
Robert & Patricia Kraft
Kenneth C. Krei
Colleen Lese & Thomas Karakis
Peter Lovance
Lois Malawsky
Lee Marquardt
Melissa & Chris Marschka
Tricia Massart
Sara Meaney
Bill & Maureen Michaels
Michael Moorhead
Jill Munson
Fred Muscavitch
Jean Novy
Tracey Olson
Molly Perillo
Barbara Peters
John Peters
Matthew & Laurie Piette
Fred Pike & Cecilia Taylor
Michael & Jayne Pink
Michelle Snyderman Platt
Karen Rhyner
Rob Scholl
Anita Steindorf
George & Eileen Stone
David Svejda
Carin & John Thomure
TruCannaBliss
Twisted Plants
Carl & Janice Welle
George & Marilyn White
Heather Whitmill
Jill Wickham
Katrene Zelenovskiy

Tribute Gifts

In Memory of Judith Milbrath
Coleman & Delia Brown
Thomas Walsh
Anthony & Stacy Menting

In Memory of Janis Heins
Scott Heins

In-Kind Donors

American Players Theatre
Anonymous
Jennifer Bergman
Kathie Bernstein
Black Shoe Hospitality
Danceworks Inc.
Roger Dickson & Linda Cesario
Discovery World
Door Shakespeare
Jennifer Kent & Kenneth Dortzbach
Grammy B's Cookies

Jane Hausman & William Finley
Float Milwaukee
Fred Astaire Dance Studios
Friends of the Domes
Mark Frohna
German Fest Milwaukee Inc.
Valerie Johnson
Michael Koss
Koss Corporation
Sandy Kreiter
Mike Laska
Lowlands Group
Marcus Performing Arts Center
Lee Marquart
Milwaukee Admirals
Milwaukee Art Museum
Milwaukee Ballet
Milwaukee Chamber Theatre
Milwaukee County Parks System
Milwaukee Irish Fest
Milwaukee Public Museum
Milwaukee Rep
Milwaukee Symphony Orchestra
Polly Morris
Next Act Theatre
Northern Sky Theater
Peninsula Players
Riveredge Nature Center
Saint Kate Arts Hotel
Savaglia Financial Advisors
Schlitz Audubon Nature Center
Walt & Irene Skipper
Snapdragon Flowers
Third Avenue Playworks
TMN Brand
Michael Unger
Urban Ecology Center

Matching Gift Corporations

Rexnord Foundation Inc.
State Farm Companies Foundation
We Energies Foundation

We make every effort to ensure that our donors are recognized properly. If we have made an error, please accept our sincere apologies and contact Kathryn Hausman at (414) 299-4953 with the correction.

Community Partners

Historic Third Ward Association
TMN Brand Design
Visit Milwaukee



**COME SPEND
THE SUMMER
WITH**
Skylight
music theatre



**At the Sharon Lynne Wilson Center
July 10-14**

- For students entering 4th-7th grade
- A weeklong creative writing and performance camp
- Performance of work will be July 14

**Skylight Music Youth Theatre presents *Godspell*
at the Broadway Theatre Center
July 10 - August 6**

- Open to students entering 7th-12th
- Summer camp culminating in a performance of *Godspell*
- Student performers will receive vocal, acting, and choreography workshops that will serve as the audition process for the production
- Technical theatre students will serve as the production crew for *Godspell* under the guidance of Milwaukee area technical theatre professionals
- *Godspell* performances are August 4, 5, 6

For more information and to register online,
visit www.skylightmusictheatre.org/EDUCATION



UNITEDPERFORMINGARTSFUND



UPAF IS FOR THE PERFORMING ARTS that you are here to enjoy today. We're for thousands of local artists in the spotlight and behind the scenes. We're for you — the audience — rediscovering excitement, inspiration and connection. We're for Milwaukee, Tosa, Waukesha, Racine & beyond. We're for being together, surrounded by the magic of music, dance, song and theater.

We're for raising our community up.

You're for the arts too, so please join us to ensure that our world-class performing arts groups make a full recovery.

► DONATE TODAY. UPAF.ORG/DONATE

Milwaukee Ballet, Marie Collins, Photo by Mark Frohna. Skylight Music Theatre, Raven Dockery, Photo by Mark Frohna.

MUSIC | DANCE | SONG | THEATER

SKYLIGHT MUSIC THEATRE STAFF

MICHAEL UNGER ARTISTIC DIRECTOR

ARTISTIC

Michael Lorenz Orchestra Contractor
Stephanie Staszak Artistic Associate

BOX OFFICE

Kelley Arlt Box Office Manager
Maureen Kailhofer Box Office Supervisor
Jordan Ilyssa Angelo, Danny Brylow,
Anna Mikula, Audwin Short,
Kylie Kenny Sian Whitney,
Rylee Zuniga Box Office Staff

DEVELOPMENT

Kelly M. Gerlach Director of Development
Kathryn Hausman Donor Stewardship Manager

EDUCATION

Amanda Rosmann Director of Education
Fred Diggins Education Associate

FACILITIES

Robert Boose Building Operations Technician
Gustavo Gomez Building Operations Technician

FINANCE

Cathy O'Loughlin Director of Finance

HOUSE MANAGEMENT

Chris Segedy Lead House Manager
Sandi Lash, Nate Press, Alydia Stangle, Zoe Waeltz,
Dawn Wenzell Assistant House Managers

SUSAN VARELA INTERIM EXECUTIVE DIRECTOR

MARKETING

Susan Heymann Director of Communications
Kendall Judy Director of Marketing
Morgan Pankratz Marketing Manager
Christopher Johnston IT/Database Manager

PRODUCTION

Joel Kipper Director of Production and Facilities
Kate Ferdinandi Asst. Director of Production
and Facilities
Leo Haselhorst Technical Director
Taylor Adams Assistant Technical Director

Scenic

Tony Roman Scene Shop Supervisor/Fleet Manager
Drea DV Carpenter

Costumes

Shima Orans Costume Director
Barry Link Costume Shop Manager
Carly Coldren Wardrobe Supervisor
Rafael Vasquez Lighting Supervisor
Anna Janicek Assistant Lighting Supervisor

Sound

Kelsea Sexton Audio Supervisor
Lane Palmer Assistant Audio Supervisor

Props

Simone Tegge Properties Supervisor
Yvonne Tessman Lead Props Artisan

SKYLIGHT MUSIC THEATRE BOARD OF DIRECTORS

Valerie Johnson, President

Ken Dortzbach, President Elect
Mike C. Lueder, Secretary
Barbara Bolens, Treasurer
Chris Behling, VP of Strategic Planning

Roger Dickson, VP of Development
Laura Emory, VP of Marketing
Alec Fraser, VP of Governance
John Stollenwerk, VP of Facilities

F. Tessa Escamilla Bartels
Colin Cabot (honorary)
Gerald Falci
Moir Fitzgerald
Robert Heath

Marni King
Lindsey Kopps
Mary McNulty
Sara Meaney
Laura Mikeworth

Howard Miller
John Shannon
Irene Pilugin Skipper
Herb Zien

PAST PRESIDENTS (chronological order)

Clair Richardson
Dale Sorden
Allen Slichter
George Krueck
Timothy Frautschi
Mary Emory
Mary Pollock
Jack Gardner

Dick Wright
Byron Foster
Nick Owen
Sue Frautschi
Jeff Nohl
Asher Nichols
Matt Flynn
Larry Salustro
Howard Miller

Suzanne Hefty
Terry Kurtenbach
John Stollenwerk
David Harvey
John Flanagan
Alec Fraser
Michael C. Lueder
Marta Bianchini
Brian D. Till

SKYLIGHT ADVOCATES

Betty & Tom Arndt
Carol & Richard Bayerlein
Polly & Robert Beal
Katherine & William Biersach
Wendy & Richard Bliss
Morton Blutstein
E. J. Brumder, Jr.
Barbara Buzard
Patricia & Phillip Crump
Thallis Drake
Elizabeth Elser
Mary & John Emory
Mary & Matthew Flynn
Gabrielle & John Franke
Susan & Timothy Frautschi
Elizabeth & Frederic Friedman
Gwenn & Joseph Graboyes
Catherine Graham
Suzanne & Roy Gromme
Lindsay Holbrook Hammerer
& Peter Hammerer
Arlene Hansen
Katie Harding
& James Pionkoski
Cheryl & Roy Hauswirth
G. Edward Heinecke
Konrad Kuchenbach
Mary & David Huntington
Sharon & Ted Hutton

Charlotte & William Johnson
Judy & Gary Jorgensen
Jeanne & Richard Kessler
Susan & Robert Kinde
Tracey & Richard Klein
Mary & Kipp Koester
Marie Kohler & Brian Mani
Patricia & Robert Kraft
Roz Krause
Pam Kriger
Kristie & Terrance Kurtenbach
Nancy & Arthur Laskin
Emilia & Christopher Layden
Phoebe Lewis
Sally Lewis
Sally Manegold
Rose Mary & Frank Matusinec
Grace McBain Haydon
& John Haydon
Sandra & Michael McNeely
Donna & Anthony Meyer
Susan Nichols
Mary & Jeff Nohl
Jody & Joe Nolan
Barbara Notestein
Jane S. O'Connell
Bruce & Candy Pindyck
Nancy Pinter & R. Max Samson
Gwen Plunkett

Roberta & Larry Polacheck
Ildy & Skip Poliner
Hattie & Edward Purtell
Gordana & Milan Racic
Kristine & James Rappe
Linda & Blaine Rieke
Lee Dougherty Ross
& Jerold Ross
Patricia & Charles Roy
Marlene & Richard Schilffarth
Kathleen & Thomas Schrader
Carol & Kevin Schuele
Marsha Ruth Sehler
Maureen & Larry Sherkow
Joanne & Vincent Shiely, Jr.
Paige Sinden
Anne & Frederick Stratton, Jr.
Lisa & Paul Sweeney
John W. Taylor
Gloria Tracy
Pauline & Calvin Verbrugge
Anne & Tom Wamser
Gwen & William Werner
Nora & Jude Werra
Kathleen & David Williams
Helen Wilson
Diane & Richard Wright
Herbert Zien
& Elizabeth Levins

JBS[®] STAR



TREIBER & STRAUB
JEWELERS

14740 W. Capitol Drive, Brookfield, WI 53005

www.treiberandstraub.com

262.790.5757