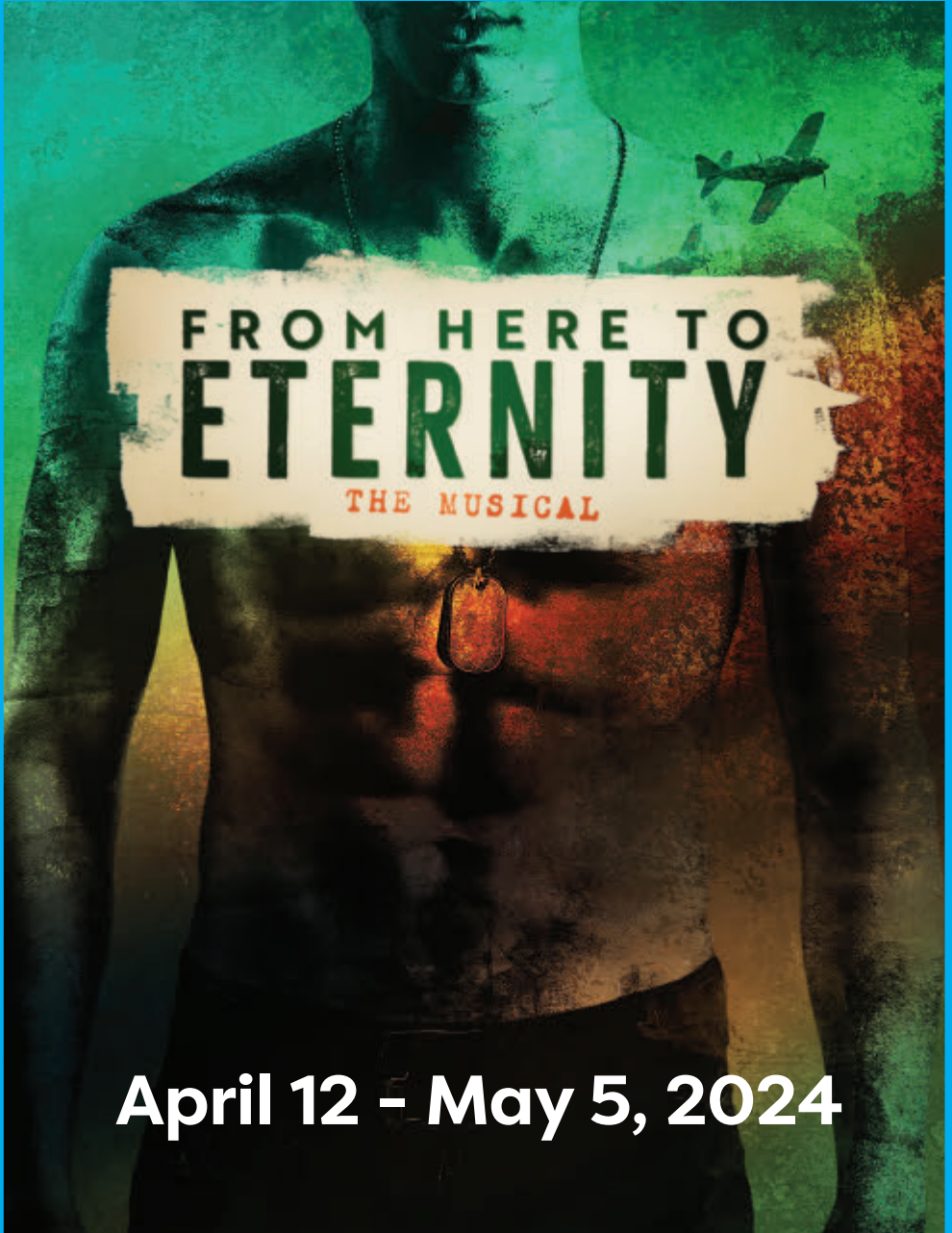


Skylight  
music theatre

Skylight's  
64<sup>TH</sup>  
SEASON!

2023-24 SEASON



April 12 - May 5, 2024

**+** *St. Camillus*  
A Life Plan Community

MAKE  
*our House*  
YOUR HOME!



JOIN THE ST. CAMILLUS FAMILY TODAY!  
414.259.6310

Milwaukee's  
**HOME**  
for  
**MUSIC**  
**THEATRE**

Skylight's  
**65<sup>TH</sup>**  
Season

**Skylight**  
music theatre

Join us for our **2024-2025** season!

**WAITRESS**

Oct. 4 – 27, 2024

LYNNE CLAYTON'S  
**OLIVER!**

Skylight Premiere!

Nov. 15 - Dec. 29, 2024

**JULIET**  
**ROMEO**  
*with a twist*

World Premiere!

Jan. 17 – Feb. 2, 2025

**FRANKENSTEIN**  
THE MUSICAL

Midwest Premiere!

Feb. 21 – Mar. 9, 2025

**SISTER**  
**ACT**

Skylight Premiere!

April 4 – 27, 2025

**SUBSCRIBE TODAY**  
**TO GET THE BEST SEATS**  
**FOR THE BEST DEAL!**



Scan to  
Subscribe

The 2024-2025 season is sponsored by:



This project is sponsored in part by a grant from the Wisconsin Arts Board with Endowment from the State of Wisconsin and the National Endowment for the Arts.



**My Only Regret –  
Not Moving Here Sooner!**

**SAINT JOHN'S**  
ON THE LAKE



Scan this image to  
hear what Patrick  
says about life  
at Saint John's.

Call 414-831-7300  
today to schedule  
your personal tour.

## **Meet Saint John's Resident, Patrick Bellegarde-Smith**

Patrick Bellegarde-Smith is a Professor emeritus of African & African Diaspora Studies at UW-Milwaukee. He did his research and chose the only Life Care Community in Wisconsin. Now he continues to enjoy the vibrancy of his eastside neighborhood, and bask in the knowledge that his future is secure with Life Care.



1840 North Prospect Ave., Milwaukee 414-831-7300 [www.SaintJohnsMilw.org](http://www.SaintJohnsMilw.org)

# Design Your Own Vision

The first and only lens that  
is adjusted to your lifestyle  
**AFTER** cataract surgery

Discover the future of cataract care at Eye Physician Associates! With over 80 years of serving Milwaukee, we bring you the latest in eye care technology. Our premium cataract packages now feature the innovative Light Adjustable Lens. Elevate your vision with us - schedule your appointment today!



EYE PHYSICIAN ASSOCIATES S.C.



From left: Robert W. Bjerregaard, MD; Emy J. Lutchka, OD; Marc D. Hirsch, MD;  
Jaime D Blanchard, OD; Dale Buettner, OD; Rosemarie M Brueggeman, MD;  
Charles B. Yang, MD



Meet the doctors

## MEQUON OFFICE

1249 W. Liebau Rd.  
Suite 102  
Mequon, WI 53092

## GREENFIELD OFFICE

4300 W. Layton Ave.  
Suite 100  
Greenfield, WI 53220

## OAK CREEK OFFICE

8375 S. Howell Ave.  
Suite 204  
Oak Creek, WI 53154

WE THINK MILWAUKEE IS WORTH SEEING  
414.928.2020 • [www.epawi.com](http://www.epawi.com)

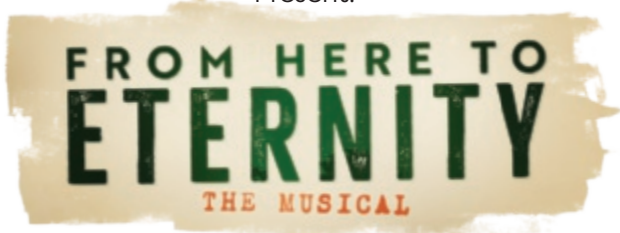
**Michael Unger**  
Artistic Director

**Susan Varela**  
Executive Director

# Skylight music theatre

In association with Heartaches Limited and Brett Smock

Present:



Based on the Novel by **James Jones**  
Lyrics by **Tim Rice**  
Music by **Stuart Brayson**  
Book by **Donald Rice** and **Bill Oakes**

April 12 – May 5, 2024 | Cabot Theatre | Broadway Theatre  
Center Directed and Choreographed by **Brett Smock** \*\*\*  
Musical Director **Logan Medland**

Scenic Designer **Jeffrey D. Kmiec**\*\*  
Lighting Designer **Jose Santiago**\*\*  
Costume Designer **Tiffany Howard**  
Sound Designer **Kevin Heard**\*\*  
Video Designer **Brian McMullen**\*\*  
Production Stage Manager **Brigham Johnson**\*  
Resident Assistant Stage Manager **Jordan Ilyssa Angelo**\*  
Assistant Stage Manager **Sami Pekelnicky**

Any video and/or audio recording of this production is strictly prohibited.

Season Sponsored by



This project is sponsored in part by a grant from the Wisconsin Arts Board with Endowment from the State of Wisconsin and the National Endowment for the Arts.



\*Appearing through an agreement between Skylight Music Theatre and Actors' Equity Association, the Union of Professional Actors and Stage Managers in the United States.



\*\*Member of United Scenic Artists 829



\*\*\* The Director/Choreographer is a member of the Stage Directors and Choreographers Society, an independent national labor union.

# A NOTE FROM THE ARTISTIC DIRECTOR



It is hard to believe we are at the end of yet another Skylight Music Theatre season. A marvelously successful season, if I may say so myself. I cannot express my thanks enough to the artists who contributed to the five shows of our 64th Season. Artists onstage, backstage, stage left, stage right, upstage, downstage, in the booth, in the shops, in the rehearsal rooms, and in the Skylight offices. It truly does take a village and I am extremely proud of ours – an amazing group of ingenious individuals who have achieved so much with the limited resources attendant to a theatre company such as ours.

I would be remiss if I did not thank you, our loyal audiences, who have cheered us on, said such positive things in the lobby and online, and seem to want us to continue in this artistic direction (see what I did there?).

And now, to the very special production you are about to witness. To have Sir Tim Rice and his collaborators here at Skylight has been a great honor. His brilliance, grace, generosity, wit, and kindness are the stuff of legend – and the legend is true.

This extremely skilled team of British Musical Theatre writers have created a quintessentially American musical that feels as authentic as can be. The subject matter revolves around that date of infamy, December 7th, 1941, when America was awakened by a surprise attack from the Imperial Japanese Navy Air Service, which was the catalyst that eventually thrust us into World War II. It should be lost on no one that our current headlines are filled with evidence of daily international conflict. Surprise attacks still happen. The resulting devastation ripples throughout the world.

The beauty of *From Here to Eternity* is that it takes us into the very personal lives of those directly affected by the Pearl Harbor attack. We meet the grunts, the officers, the friends, the local enemies, the struggles within the hierarchy, the individual stories, the dreams, and, ultimately, the tragedy.

Every production we create gives us the opportunity to tell stories that inspire, inform, and have the potential to change perspectives. We hope that the shows of the 64th season have done all that and more through laughter, tears, connection, sorrow, and elation. We promise that the 65th season will continue this trend of engaging, transformative stories that focus on fascinating characters. We thank you for coming today and look forward to seeing you at least five times next season!



-Michael Unger, Artistic Director

# A NOTE FROM EXECUTIVE DIRECTOR: SUSAN VARELA



## Welcome to Milwaukee's Home for Music Theatre!

We are thrilled to have you here with us today. At Skylight, we are committed to bringing you exceptional productions that inspire, entertain, and educate. Whether you're a longtime subscriber or new to us, we are grateful for your presence and generosity.

The magic you'll witness onstage is fueled by the dedication and support of individuals like you. While ticket sales help us bring these productions to life, they alone do not cover the costs of running a theatre company. Please consider a donation to Skylight - there is a QR code at the back of this program to make your giving quick and easy. Your generosity will play a vital role in sustaining our mission and ensuring that Skylight continues to serve our community.

Your contributions will help us to nurture emerging talent, stage innovative productions, and engage with our community in meaningful ways. A gift to Skylight will not only support our incredible productions but extend well beyond our walls through our time-tested education programs and community outreach. With champions like you by our side, we can ensure that the music never stops, and the lights continue to shine brightly at Skylight Music Theatre for years to come.

With Gratitude,

A handwritten signature of Susan Varela in cursive script, written in black ink.

Susan Varela, Executive Director



# CAST



Private Robert E. Lee Prewitt.....	Ian Ward*
First Sergeant Milt Warden.....	Matt Faucher*
Lorene.....	Jamie Mercado
Karen Holmes.....	Kaitlyn Davidson*
Private Angelo Maggio.....	Gianni Palmarini
Captain Dana Holmes.....	Neil Brookshire*
Colonel Delbert.....	Jonathan Wainwright*
Corporal Bloom.....	Ben James Tyrrell
Sergeant Judson.....	Jared Brandt Hoover
Mrs. Kipfer.....	Michelle Liu Coughlin*
Private Riggs.....	Jake Horstmeier
Private Williams.....	Armando Ronconi
Private Montello.....	Joey Chelius
Private Byrd.....	Wesley Hodges
Private Ruiz.....	Zachary Iniguez
Private Anderson.....	Brett Bainer
Private Tucker.....	Jason Rodriguez
Private Clark.....	Ethan Hardy Benson

## UNDERSTUDIES

Understudies never substitute for listed players unless a specific notification is made at the time of the performance.

Ken Miller as Understudy for Captain Dana Holmes, Sergeant Judson, and Colonel Delbert; Brett Bainer for First Sergeant Milt Warden; Armando Ronconi for Private Angelo Maggio; Ben James Tyrrell for Private Robert E. Lee Prewitt

**DANCE CAPTAIN** - Kaitlyn Davidson\*

**FIGHT CAPTAIN** - Ken Miller

# ORCHESTRA

Conductor/Keyboard 1.....	Logan Medland
Percussion .....	Michael (Ding) Lorenz
Guitar.....	Bob Monagle
Guitar.....	Chris Newlin
Bass .....	Michael Ritter

## PRODUCTION SUPPORT

Fight/Intimacy Director .....	Christopher Elst
Assistant Fight Director .....	Ken Miller
Script Supervisor.....	Nathaniel Unger
Director of Production and Facilities.....	Matthew Curtis
Assistant Director of Production and Facilities .....	Jordan Ilyssa Angelo
Technical Director .....	Joseph Piirto
Scene Shop Supervisor/Fleet Manager.....	Islay Reed
Scenic Design Associate .....	Milo Bue
Scenic Carpenters.....	Islay Reed, Austin Hobbs
Scenic Charge Artist.....	Kaitie Branton
Scenic Painters.....	Talia Last, Zoe Lucas, Amaya Rockett
Properties Supervisor .....	Simone Tegge
Props Builders / Painters.....	Kaitie Branton, Talia Last, Amaya Rockett
Lighting Supervisor and Operator/Programmer.....	Dovie Hughes
Electricians.....	Isabelle Flores, Rollie Layman, Zoe Lucas, Nate Pilarski
Follow Spot Operators .....	Talia Last, Zoe Lucas
Video Support Engineer.....	Steve Tonar
Front of House Audio Engineer.....	Jack Purves
Costume Director .....	Jeanne Schrank
Wardrobe Supervisor .....	Carly Coldren
Wardrobe Crew .....	Jess Llanas
Costume Crafts .....	Lisa Quinn
Keyboard Programmer .....	Logan Medland
Resident Assistant Stage Manager.....	Jordan Ilyssa Angelo*
Assistant Stage Manger .....	Samantha Pikelnick
Deck Crew .....	Nate Pilarski
Barber.....	Mr. V's Barberia
Graphic Design Support .....	Robert "Bebo" Nelson
Photographer .....	Mark Frohna

# Get Ready for Next Summer Now



*See More Projects*



**David J. Frank**  
Landscape Contracting

**We work year-round.**

**Request a quote today at [davidjfrank.com](http://davidjfrank.com)**

*Southeastern Wisconsin's premier landscaping company*

# MUSICAL NUMBERS

## ACT ONE

Prologue.....	The Company
G Company Blues.....	G Company Soldiers
Thirty-Year Man.....	Prewitt, G Company Soldiers
More to Life.....	Karen Holmes
I Know What You Came For.....	Mrs. Kipfer
From Here to Eternity.....	Prewitt & G Company Soldiers
At Ease.....	Warden
Love Me Forever Today.....	Prewitt & Lorene
Thirty-Year Man (Reprise).....	Sgt. Warden, Bloom, Maggio, Prewitt & G Company Soldiers

## ACT TWO

Ain't Where I Wanna Be Blues.....	Prewitt & Sgt. Warden
Run Along Joe.....	Lorene
I Love the Army.....	Maggio
Fight the Fight.....	Prewitt
I Love the Army (Reprise).....	Bloom
Fight the Fight (Reprise).....	Prewitt
I'll Remember the Day.....	Karen Holmes
The Boys of '41.....	G Company Soldiers, Lorene, Karen Holmes & Mrs. Kipfer
Run Along Joe (Reprise).....	Lorene
Almost Perfect Lie.....	Prewitt
G Company Blues (Reprise).....	G Company
The Boys of '41 (Reprise).....	The Company



THIS PROGRAM PROVIDED BY

# ENCORE

To generate sales for your business,  
advertise in any of our premium programs.  
Call Scott for more information:

**Scott Howland**

*Sales & Marketing Director*

414.469.7779

[scott.encore@att.net](mailto:scott.encore@att.net)

- Milwaukee Repertory Theater
- Milwaukee Symphony Orchestra
- Florentine Opera Company
- Milwaukee Ballet
- Broadway at the Marcus Center
- Skylight Music Theatre
- Sharon Lynne Wilson Center



**Knight | Barry**  
TITLE GROUP  
Our People. Your Success.

At Knight Barry Title, we have hundreds of experienced title and closing professionals. Our skilled staff of problem solvers is ready to provide fast, accurate services to commercial and residential customers, no matter the size of the real estate!

[WWW.KNIGHTBARRY.COM](http://WWW.KNIGHTBARRY.COM)

Knight Barry Title Inc., 201 E. Pittsburgh Ave., Suite 200, Milwaukee, WI 53204  
Wisconsin . Minnesota . Michigan . Florida . Texas



EASTCASTLE PLACE



*Experience  
Harmony*  
IN SENIOR LIVING

With a legacy spanning nearly 140 years, Eastcastle Place has been a welcoming Life Plan Community, providing a continuum of care tailored to meet the evolving needs of our residents. Nestled in Milwaukee's vibrant East Side, our community has recently undergone exciting transformations, featuring newly renovated spaces such as an inviting dining room and bar. Join us in embracing a lifestyle that honors our rich history while looking ahead to an even brighter future.

**Call (414) 519-9477 or visit  
Eastcastleplace.com.**

**2505 East Bradford Avenue  
Milwaukee, WI 53211  
Eastcastleplace.com**

Managed by  Life Care Services        



**C** HANT  
LAIRE **10** YEARS

MAY 18 • 7:30PM | MAY 19 • 3PM | MKE  
ST. MARCUS | 2215 N PALMER STREET

*featured composers*

BARRETT • DOVE • GJEILO • GRETCHANINOV  
HOLST • PAULUS • PARRY • MACMILLAN  
VAUGHAN WILLIAMS & MORE

tickets at [www.chantclaire.org](http://www.chantclaire.org) |     

# Trust Your Health to One of Milwaukee's Most Respected Medical Practices.

It's important to choose a physician who will listen closely to your needs and respond genuinely to your concerns. Fortunately for you and your family, our physicians have been providing exceptional care in Milwaukee and Ozaukee for over 120 years.

## INTERNAL MEDICINE



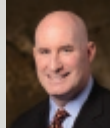
Kathleen Baugrud, M.D.



Avi Bernstein, M.D.



John Betz, M.D.



Matthew Connolly, M.D.



Kevin DiNapoli, M.D.



Deirdre Faust, M.D.



David Goldberg, M.D.



Scott Jorgensen, M.D.



Unchu Ko, M.D.



David Lucke, M.D.



Rachel Oosterbaan, M.D.



John Sanidas, M.D.



Abraham Varghese, M.D.



James Volberding, M.D.



Carmen Bakling, M.D.



Camille Hessel, M.D.

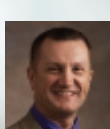
## MOHS SURGERY



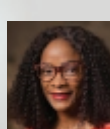
Amy DeGueme, M.D.



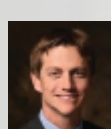
Elaine Drobny, M.D.



Antoni Gofron, M.D.



Usonwanne Ibekwe, M.D.



Brent Jones, M.D.



Kawaljeet Kaur, M.D.



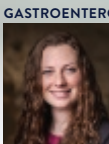
Anne Lent, M.D.



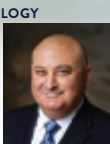
Kristin Schroederus, M.D.

## ENDOCRINOLOGY

## ALLERGY & IMMUNOLOGY



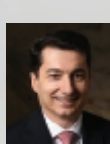
Keely Browning, M.D.



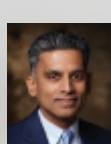
Abdullah Fayyad, M.D.



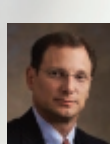
Gene Kligman, M.D.



Venelin Kounev, M.D.



Srihari Ramanujam, M.D.



Chad Stepke, M.D.



# MADISON MEDICAL AFFILIATES



**MADISON MEDICAL**  
MILWAUKEE · MEQUON

MadisonMedical.com | 414.272.8950

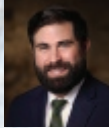
## DERMATOLOGY



Amanda Cooper, M.D.



Tracy Donahue, M.D.



Michael Knabel, M.D.



Valerie Lyon, M.D.



Jack Maloney, M.D.



Jason Rosenberg, M.D.



Debra Scarlett, M.D.



Thorsteinn Skulason, M.D.

## SURGERY



Heather Wells, M.D.



Richard Catterly, M.D.



Jasna Coralic, M.D.



Alysandra Lal, M.D.



Joseph Regan, M.D.



Craig Siverhus, M.D.



Jake Thayer, M.D.

## UROLOGY



Kevin Gee, M.D.



Christopher Kearns, M.D.



Jonathan Berkoff, M.D.



Katya Frantskevich, M.D.



Shireen Jayne, D.O.



Jennifer Moralez, M.D.



Nicolette Deveneseu, M.D.

## OBSTETRICS & GYNECOLOGY

## UROGYNECOLOGY

## COMPREHENSIVE EYE CARE



Lisa Bennett, M.D.



Alwin Edakkunathu, D.O.



James Ivanoski, D.O.



Joseph Zilisch, M.D.

## PULMONARY



Dima Adl, M.D.



Jay Balachandran, M.D.



Burak Gurses, M.D.

# WHO'S WHO IN THE CAST



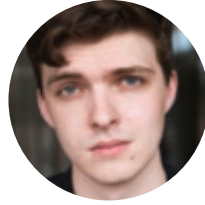
Brett Bainer



Ethan Hardy Benson



Neil Brookshire\*



Joey Chelius



Michelle Liu Coughlin\*



Kaitlyn Davidson\*



Matt Faucher\*



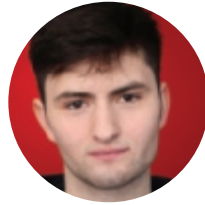
Wesley Hodges



Jared Brandt Hoover



Jake Horstmeier



Zachary Iniguez



Jamie Mercado



Ken Miller



Gianni Palmarini



Jason Rodriguez



Armando Ronconi



Ben James Tyrrell



Jonathan Wainwright\*



Ian Ward\*

# BIOS

**Brett Bainer (Private Anderson/Warden U/S)** is an actor and singer from Central Connecticut. Recent credits: *All Is Calm-The Christmas Truce of 1914* (Thingamajig Theatre Co.) *My Way* (Greater Ocean City Theatre Co.). National Tour: *Alexander and the Terrible...Day* (Two Beans/TheaterWorks). NYC: *Do I Know You?* (The Players Theatre). Regionally, he has also worked at Prather Entertainment Group, Ivorton Playhouse and Seven Angels Theater. Recent Workshops: *Fully ReCOOPerated*, *On Trash Monsters*. Lastly, he has a single available on all streaming platforms called "Fire." Love to this incredible team, Dolly, and my beautiful support system!

**Ethan Hardy Benson (Private Clark)** Skylight Music Theatre debut! He was most recently seen as the Jesus Alternate for the 50th Anniversary Tour for *Jesus Christ Superstar*. Regional: Philadelphia Orchestra, Red Mountain Theatre Company, Thingamajig Theatre Company. University of Michigan alum. Many thanks to his family, friends & forever supporters. Represented by Avalon Artists. Ethan is incredibly grateful to bring this magnificent piece to life! @ethanhbenson

**Neil Brookshire\* (Captain Dana Holmes)** Milwaukee credits: *Witch*, *Photograph 51*, *The Violet Hour* with Renaissance Theaterworks; *There is a Happiness that Morning Is*, *The Last White Man* with NextAct Theatre, and *The Thanksgiving Play* with MCT. Additional Wisconsin theaters: Third Avenue Playworks, Door Shakespeare, Peninsula Players. He co-authored and performs Bent Compass, a solo show of true stories of an Army Medic. Neil has an Interdisciplinary Studies BA from Boise State University, and MFA in Acting from Northern Illinois University. www.neilbrookshire.com

**Joey Chelius (Private Montello)** A Chicago actor and Milwaukee native, Joey Chelius is thrilled to be back home for this gripping production. Most recently seen at the historic Fireside as Bob Gaudio in *Jersey Boys* and as Charles Clarke in *Titanic*, his credits include Claude in *HAIR* under Jeff-winning director, Derek VanBarham, and other Skylight appearances including Phoebus in Dennis DeYoung's *Hunchback of Notre Dame*, Malcolm in *The Full Monty*, and the Midwest premiere of *Disney's A Jolly Holiday*. Dedicated with love and pride to his brothers. @joey.chelius

**Michelle Liu Coughlin\* (Mrs. Kipfer)** is thrilled to be making her Skylight Music Theatre debut. She's worked in theatre, television, film, and symphony concerts across the country, including the Lincoln Center Theatre's first national tour of *The King and I* directed by Bartlett Sher. She was recently seen in the Off-Broadway premiere of *The Karpovskiy Variations*. Select regional: CVRep, Virginia Stage Co., Arena Stage, Kennedy Center, KC Starlight, and Arvada Center. Select TV/Film: *FBI*, *New Amsterdam*, *The OA*, *It's Complicated*, Hallmark's *Sand Dollar Cove* and *Holiday in Harlem*. www.michelleliucoughlin.com IG: @michelleliuc

**Kaitlyn Davidson\* (Karen Holmes/Dance Caption)** Broadway and National Tour: *R+H's Cinderella* (Ella), *White Christmas* (Judy Haynes), *Bright Star* (Lucy Grant), *CATS* (Jellylorum), and *Nice Work If You Can Get It*. Kaitlyn has performed at Carnegie Hall, for City Center Encores!, the Kennedy Center, the Transport Group, and the American Repertory Theatre; among many prestigious regional theaters across the country. On TV, she can be seen recurring as Lizzie Stabler on NBC's *Law and Order: Organized Crime*. CCM alum. @kaitlyndavidsonofficial.

**Matt Faucher\* (First Sergeant Milt Warden)** Broadway: *Beautiful: The Carole King Musical*. National Tour: *Jersey Boys* (Nick Mas-si) / *Beautiful*. Off-Broadway: *The Threepenny Opera* (Macheath, Drama Desk nomination), *Harvey Milk* at Avery Fisher Hall, and Chekhov Dreams. Regional: The Muny, Goodspeed Musicals, Paper Mill Playhouse, Hartford Stage, Asolo Rep, Northern Stage, The Olney, ACT of CT, and the Arts Center of Coastal Carolina. TV: *FBI: Most Wanted* - CBS. Love to Britt and Frankie. Follow on IG: @the\_fauch / mattfaucheractor.com

**Wesley Hodges (Private Byrd)** is very excited to make his debut with Skylight Music Theatre and take his first ever trip to Wisconsin to tell this wonderful story! Favorite roles include Tom Collins (*Rent*), Curtis Jackson (*Sister Act*), Billy Bigelow (*Carousel*), Harpo (*The Color Purple*), and Mereb (*Aida*). Wesley thanks his family and friends for their constant love and support, and he's excited to take in all the experiences and cheese that Milwaukee has to offer. @bari-withglasses

# BIOS CONTINUED

**Jared Brandt Hoover (Sergeant Judson)** is excited to be making his Skylight Music Theater debut! He moved to Milwaukee 3 years ago after graduating from Point Park University, in Pittsburgh, with a degree in Musical Theater. He was an Emerging Professional Resident at the Milwaukee Rep, and has continued to work in theaters around Wisconsin, like Renaissance Theaterworks, Forward Theater, and now Skylight! Jared is so excited and honored to get to work on this project with his fellow cast and crew members.

**Jake Horstmeier (Private Riggs)** is an actor/singer/songwriter who has worked in New York City, regional theatre, independent film, and new media. Recent Skylight credits include Ned Schneebly in *School of Rock*, Freddie Fellows in *Noises Off* and Bill Austin in *MAMMA MIA!* As a singer/songwriter he performs under the moniker Dacada Summer. He currently teaches Physical Performance at the UWM Peck School of the Arts. He received his MFA in Acting from Purdue University.

**Zachary Iniguez (Private Ruiz)** [he/him] is a Milwaukee-based actor who is thrilled and humbled to be involved in the development of this project. He is elated to be returning to the Cabot Theatre stage, having recently made his Skylight debut as Georg in *Spring Awakening*. Other professional credits include Custus/Perkins in *Crazy for You* at Tent Theatre and *Brigadoon* in Concert, presented in conjunction with the Springfield Symphony Orchestra.

**Jamie Mercado (Lorene)** is delighted to be back at Skylight this spring! You may recognize her from previous Skylight shows such as Dennis DeYoung's *The Hunchback of Notre Dame* and *Newsies*. Other credits include: Beehive: *The Sixties Musical* at Milwaukee Repertory Theater, *Dad's Season Tickets* at Northern Sky Theater, and *Matilda* at First Stage. She would like to thank her friends and family for their unconditional support. On Instagram: @jamie-lynnmercado

**Ken Miller (U/S Captain Dana Holmes, Sergeant Judson, and Colonel Delbert / Assistant Fight Director)** is a Milwaukee based actor, teacher, and director. After getting his MFA from Northern Illinois University in 2019 Ken moved to Milwaukee and has loved it ever since. He has worked with other Wisconsin theatres like Door Shakespeare, Sunstone Studios, First Stage, and Next Act. He has also taught at First Stage, UW-Milwaukee, and Northern Illinois University.

**20** Skylight 2023-2024 Season

**Gianni Palmarini (Private Angelo Maggio)** is an actor/multi-instrumentalist based in NYC and is so happy to be making his Skylight debut in *From Here to Eternity*. He recently made his NYC debut in a reading of the new pop/rock musical *The Ladies Man* starring Kate Rockwell and Amber Ardolino. Regional: Phoenix Theatre Co, WPPAC, Forestburgh, Mill Mountain, and others. BFA Elon University. Love to my friends, family, and DGRW. Thanks to Brett for this shot. For my Dad, who immigrated here in 1971. @gianni.palmarini

**Jason Rodriguez (Private Tucker)** is a NYC based performer from Hamilton, New Jersey. He spent last year sailing the world with Princess Cruise Lines as a Production Vocalist. His previous credits include the National Tour of *The Lightning Thief*: TYA Edition (Luke, Percy Cover), *Once on This Island* (Daniel) at Encore Music Theatre and *Aida* (Radames) at Glow Lyric Theatre. He'd like to thank his friends and family who have helped him become a better performer and person. IG @\_jrod\_9

**Armando Ronconi (Private Williams/Maggio U/S)** is thrilled to be making his Skylight debut as a member of the Ensemble in *From Here to Eternity!* A proud graduate from Marquette University in 2015, he is so excited to return to Milwaukee after nearly a decade! Previous credits include: *Million Dollar Quartet* (Elvis), *Disney on Classic '22 Japan Tour* (Flynn Rider/Phoebus), *Legally Blonde* (Emmett Forrest) *How I Became a Pirate* (Sharktooth). He would like to thank his friends and family for their constant love and support!

**Ben James Tyrrell (Corporal Bloom/Prewitt U/S)** is absolutely thrilled to be making his professional debut with Skylight Music Theater. Ben graduated from the University of Arizona with a BFA in Musical Theatre in 2023 and is currently based in New York City. Some of Ben's highlights from the Arizona Repertory Theatre are *High Fidelity* (Barry), *Into The Woods* (Rapunzel's Prince), and *Romeo & Juliet* (Tybalt). Ben was also in a SAG short film titled *Room Service* in January. @benjamestyrell

**JONATHAN WAINWRIGHT\* (Colonel Delbert)** is thrilled to back at Skylight and the Cabot Theatre. He was last on this stage in *Take Me Out* with Chamber, and with Skylight in *Cabaret* as Cliff. Other credits include Milwaukee Rep in *Dial M For Murder* as Hubbard, *Of Mice and Men* as George, *A Christmas Carol* as Cratchit and later, Scrooge, Next Act in *The Exonerated*,



# BIOS CONTINUED

*Sideman*, and *Coyote On A Fence*, and Chamber in *Misery*, *The Good Father*, and *Criminal Hearts*.

**Ian Ward\* (Private Robert E. Lee Prewitt)** is grateful to be working with Brett Smock again, in his *Skylight* debut! Ward starred in Smock's *Catch Me If You Can* at the REV, two years ago. Since then, Ian has played Roger in *Rent* at OSF, performed in Shanghai in *The Great Comet of 1812*, and worked with Pat Benatar in her musical *Invincible* at The Wallis. Broadway: *Gettin' the Band Back Together*. TV/Film: 9-1-1, *Veronica Mars*, *Lifetime's Bad Tutor*. @ianwardoutward

## CREATIVE TEAM

**Brett Smock (Director/Choreographer/Co-Producer)** is the Producing Artistic Director of The REV Theatre Company - a nationally acclaimed regional theatre located in Auburn, NY. The REV is an engine for arts education and the development of new and reimagined musicals and is routinely recognized for its artistry and execution. [www.therevtheatre.com](http://www.therevtheatre.com)

Brett has served as director and co-producer of *From Here To Eternity* throughout its development: The REV / North American premiere 2016 / Ogunquit Playhouse 2017 / NYC Workshop 2019 / London's Charing Cross Theatre 2023 and now *Skylight* Music Theatre.

Directing highlights include over 150 shows to date including US and international productions, industrials, special events, readings, and workshops. Brett's producing credits include the pre-Broadway productions of *Anne of Green Gables* (REV '18/Goodspeed '23/Pre-Broadway), *Loch Ness* (REV '19), *Treasure Island* (Arkansas Rep '13/REV '16), *Austen's Pride* (REV '16/Carnegie Hall '23), and 71 new musicals at The REV's new works program, *The PITCH*. This fall, Brett will produce and direct the new production of *May We All, A New Country Musical* in conjunction with Lively-McCabe Entertainment, Brian Kelley (Florida-Georgia Line) and MTI.

Brett has served on several boards, has taught at many US colleges and universities and is always in search of the next great story to put on stage. He was born in Kailua, Hawaii, grew up overseas and now lives in Auburn, NY and NYC. He is a member of The Stage Directors and Choreographers Society (SDC), Actor's Equity Association (AEA), National Alliance of Musical Theatre (NAMT) and The Dramatists Guild (DG).

**Logan Medland (Music Director)** is a Composer, Writer and Music Director. On Broadway he was in the original orchestra of *A Bronx Tale* and *Dr. Zhivago*. He was the Associate MD for productions of *Jersey Boys* in Toronto and the First National tour. He created book, music and lyrics for *In The Wings* formerly titled *Fingers and Toes* at the New York Musical Festival in 2010, and wrote music and lyrics for *Love Goddess: The Rita Hayworth Musical*; Off-West End, London in 2022.

**Jeffrey D. Kniec (Scenic Designer)** is an award-winning, New York-based Production Designer for Theatre and Television. His designs have been seen on NBC, Apple+, Comedy Central, and the CW as well as Norwegian Cruise Line, Chicago Shakespeare Theatre, The Lyric Opera, Theatre Under the Stars, Paramount Theatre, Drury Lane Theatre, Marriott Theatre, American Players Theatre, and The REV Theatre. Jeffrey received his MFA from the University of Virginia, BA from Illinois State University, and is a member of USA 829.

**Tiffany Howard (Costume Designer)** comes to *Skylight* Music Theatre via The REV Theatre where she is the Resident Costume Designer and Costume Shop Manager. Some of her favorite designs from the last few years include *Into the Woods*, *Beautiful: The Carol King Musical*, *Catch Me if You Can*, *The Hunchback of Notre Dame*, *Cabaret*. She also works with the educational theatre touring arm of The REV, where live theatre is brought to thousands of students across New York state each year.

**Jose Santiago (Lighting Designer)** is a New York City based Lighting Designer. His work has been seen at Pioneer Theatre Company, Chicago Opera, The Paramount Theatre (Aurora, IL), Drury Lane (Chicago), Center REP, Bristol Riverside Theatre, North Shore Music Theatre, Theatre by the Sea, Bay Street Theatre, Gretna Playhouse, The Gateway, The Engeman Theater, Guild Hall, Penobscot Theatre, 5 Star Theatricals, Slow Burn Theatre, Gulfshore Playhouse. He received his MFA in Lighting Design from Florida State University. Proud member of USA829 and represented by Michael Moore Agency. [www.jsantiagodesign.com](http://www.jsantiagodesign.com)

**Kevin Heard (Sound Designer)** is a producer and sound designer for theatre and live experiences. He is excited to be at *Skylight* for the first time to revisit *From Here to Eternity*, which he previously designed at The REV and

# BIOS CONTINUED

Ogunquit Playhouse. Select credits include Broadway (as associate): *Good Night Oscar*, *All The Way*. Off-Broadway: *FIVE*, *Lizard Boy*, *iAmericano!*, *In & Of Itself*. Dozens of regional and international sound designs. Producer: *The Jinx & DeLa Holiday Show*. Member of United Scenic Artists. [HeardSoundDesign.com](http://HeardSoundDesign.com)

**Brian McMullen (Video Designer)** Broadway: Associate Video Designer; *A Christmas Carol*, *How I Learned to Drive*, *Jagged Little Pill*, *The Cher Show*. Assistant Video Designer *Saint Joan*, *The Parisian Woman*. National Tour: *Jagged Little Pill*, *Blue Man Group On Tour*, *On Your Feet*. Regional: *Cinderella*, *Kiss Me Kate* (Broadway at Music Circus) *Matilda* (Syracuse Stage), *Man of La Mancha* (Triad Stage), *Beehive*, *Smokey Joe's Cafe* (The Rev Theatre Company), and *Nathan Gunn, Flying Solo* (Laguna Playhouse and San Diego Rep.) Broadcast: Scenic Animations department for the 70th, 71st, and 72nd Annual TONY Awards. [brianp McMullen.com](http://brianp McMullen.com)

**Brigham Johnson\* (Production Stage Manager)** is excited to make his Skylight debut. Tours: *Annie*, *Dr. Seuss' How the Grinch Stole Christmas 22' & 23'*, *Christmas in Killarney*. Norwegian Cruise Line: *SIX*, *Jersey Boys*, *After Midnight*, *The Choir of Man*. Musical Theatre West: *42nd Street*, *The Wizard of Oz*. The Gateway: *Head Over Heels*, *Disney's The Little Mermaid*, *The Cher Show*. Other Regional Theatres: The Rev, Florida Repertory, Triad Stage, and Connecticut Repertory. Brig is a graduate of Western Carolina University. Special thanks to his family and friends.

**Jordan Ilyssa Angelo\* (Resident Assistant Stage Manager)** is thrilled to be a part of this project, making it her 15th show with Skylight! Originally from Rhode Island, Jordan is a Marquette alum who returned to Milwaukee to pursue her love of theatre. She was last "seen" backstage during *Spring Awakening* and seen onstage — on purpose! — as a security guard in *School of Rock*. Favorite Skylight credits include *SuperYou* and Dennis DeYoung's *The Hunchback of Notre Dame*. Much love to her family, 3 kitties, and Steve for supporting the dream!

**Sami Pekelnicky (Assistant Stage Manager)** is excited to be back at Skylight! Originally from Georgia, she is a UW-Whitewater alum who stayed in Wisconsin and never left. This is her 8th show with Skylight, having previously worked on select favorites *School of Rock*, *Noises Off*, and *Evita*.

**Christopher Elst (Fight Director / Intimacy Director)** (He / They) is thrilled to return to *From Here to Eternity!* A prominent member of several national theater organizations and an advocate for safe practices in theaters nationwide, Christopher has performed, directed, and designed violence and intimacy for professional theaters across the country, including Ogunquit Playhouse, Door Shakespeare, Next Act Theatre, Milwaukee Chamber Theatre, Renaissance Theatreworks, and the Milwaukee Rep. He thanks Brett Smock for another tour in Hawai'i.

**Tim Rice (Lyricist)** has worked in music, theatre and films since 1965 when he met Andrew Lloyd Webber, a fellow struggling songwriter. Rather than pursue Tim's ambitions to write rock or pop songs they turned their attention to Andrew's obsession — musical theatre. Their first collaboration was based on the life of Dr. Thomas Barnardo, the Victorian philanthropist, *The Likes Of Us*. Their next three works together were much more successful — *Joseph and the Amazing Technicolor Dreamcoat*, *Jesus Christ Superstar* and *Evita*.

Tim has since worked with other distinguished popular composers such as Elton John (*The Lion King*, *Aida*), Alan Menken (*Aladdin*, *King David*, *Beauty and the Beast*), Bjorn Ulvaeus and Benny Andersson (*Chess*), and Stuart Brayson (*From Here To Eternity*). He also written with Freddie Mercury, Burt Bacharach and Rick Wakeman among others.

He has recently recorded a full series of talks on Writing and Performing in Musical Theatre, currently available on BBC Maestro. He is also writing and presenting a podcast (entitled *Get Onto My Cloud*) reminiscing about his years in music, theatre and film — playing hits and flops, out-takes and number ones.

Every now and then, inspired by his hero and friend the late Sammy Cahn, he presents an evening of his songs, performed by top singers and musicians rather than by him, to which Tim adds reminiscence and comment, recalling their creation, success (or rejection) and the joy (usually) of working with great composers. He is taking this show on the road entitled *My Life In Musicals* to more than 20 theatres in the UK April/May 2024.

Many of his shows continue to play around the world in a huge variety of productions, big and small. A new Broadway presentation of *Chess* is scheduled for early 2025 and he hopes *Aida*, his Tony-award winning show with Elton John, will finally make its London debut before he is too old to notice.

# BIOS CONTINUED

Sir Tim's interests beyond music, film, and theatre include cricket, as English an interest as you can get. He founded his own cricket team in 1973, which has now played 750 matches including several abroad, including tours to the USA, Russia, Hungary, Germany, and South Africa.

He dedicates considerable time to several British educational institutions and charitable organisations, many connected with sport for disadvantaged children. He has won several awards, mainly for the wrong thing or for simply turning up, but since you ask: 1 Emmy, 5 Grammys, 3 Tonys, and 3 Oscars, making him an EGOT. Plus a Pointless Trophy.

**Stuart Brayson (Composer)** was born in Gateshead and started his career as singer/songwriter in the rock band POP. He has so far written 28 musicals. Book, music and lyrics. These include, *Zip Fly-The Boy Who Wanted More*, his first musical about his experiences in the pop business which premiered at Buxton Festival of Musicals and transferred to Liverpool's Unity Theatre. *Mata!*, an epic musical about the life and times of courtesan/spy Mata Hari, which received its world premiere at Blackpool's Grand Theatre. *From Here to Eternity* with lyrics by Sir Tim Rice and book by Bill Oakes, received its world premiere at Shaftesbury Theatre in London. *Jimmy Mac*, a musical comedy, received its world premiere at the Gaiety Theatre on the Isle of Man. *King Pit*, received its world premiere at Sage Gateshead. *Pink Angora Sweater*, a musical comedy based upon the life of cross-dressing worst film director of all time, Ed Wood, has so far received workshops at Central School of Speech and Drama and PPA Academy. *Jonah and His Astounding Dancing Whale*, a children's musical, has been workshoped with young students at 'Spirit.' *BESS-A Pop Musical*, received its first performance at Bird College. *2 Dumb*, a new rock musical with a book by Tim Newman, received its world premiere at Roedean Theatre in Brighton. Stuart is currently developing his musical, *Irish Affair* with the National Opera House in Wexford, Ireland. And his musical comedy, *The Dolce Vita*, with the Tyne Theatre and Opera House in Newcastle. His popular, *An Evening with Stuart Brayson*, where Stuart and guest artists

perform songs from his many shows and Stuart also candidly discusses his career in the pop business and musical theatre has been seen on both sides of the pond. [www.stuartbrayson.co.uk](http://www.stuartbrayson.co.uk) [info@stuartbrayson.co.uk](mailto:info@stuartbrayson.co.uk)

**Donald Rice (Book)** was born in Oxford, England, and studied at Edinburgh University. He began his career in film, writing and directing the award-winning short films *Traffic Warden* and *I am Bob* (long-listed for an Academy Award) and directing the feature film *Cheerful Weather for the Wedding* (co-written with Mary Henely Magill). For theatre, he produced *Blondel* (Union Theatre, London) and *The Likes of Us* for Heartaches and is currently adapting Eva Rice's novel *The Lost Art of Keeping Secrets* for television for Moonage Pictures. He has worked for HartSharp Entertainment in New York and for Stephen Poliakoff on the Emmy award-winning BBC drama *The Lost Prince*.

**Bill Oakes (Book)** A native of Nottingham, England, Bill first made his reputation in New York as head of Robert Stigwood's company, RSO. With a roster of artists that included Eric Clapton and the Bee Gees, RSO quickly became America's most successful independent record label.

Hollywood soon beckoned, in the form of two groundbreaking movies, *Sturday Night Fever* and *Grease*. The albums that Bill Oakes produced for both films remain two of the best-selling soundtracks of all time.

Bill won a Grammy Award for *Saturday Night Fever* and an American Music Award for *Grease*. He also supervised soundtracks for (among others) Alan Parker's *Fame* and George Lucas's *The Empire Strikes Back*.

As a film producer, Bill's credits include *Staying Alive* (again with John Travolta, and directed by Sylvester Stallone) and *The Little Rascals*, which Bill produced for Steven Spielberg's Amblin Entertainment.

As a writer, Bill's stage adaptation of *Saturday Night Fever* is currently touring the UK. His screen credits include *Life and Soul* (Granada TV), *My Generation* and *FAB*. His latest film is *Pink Mafia*, due for release next year.

**Michael Unger (Artistic Director)** For *Skylight*, Michael has directed Dennis DeYoung's *The Hunchback of Notre Dame* (nine Broadway-World Awards – including Best Director and Best Musical), *Spring Awakening*, *School of Rock*, *Noises Off*, *Little Shop of Horrors*, *A Jolly Holiday: Celebrating Disney's Broadway Hits*, and *Me, Myself and I* for Skylight's Education program. Amongst many virtual offerings, he directed the Broadway World Award-winning *Being Earnest*, now available worldwide online. He was previously the Associate Artistic Director of Off-Broadway's York Theatre; credits there include *You're A Good Man Charlie Brown* and *Big*. For nine years, he was the Producing Artistic Director of NewArts, started with a local father in response to the Sandy Hook Elementary School tragedy; directing 17 productions working with over 650 area-children. Other selected directing credits include *A Christmas Carol* (McCarter Theatre for 18 years), *Two Point Oh* (NY Times Critics' Pick), *Time Stands Still* (Cape Cod Chronicle Best 2015), *My Sister in This House* (Deaf West, Ovation Recommended), and new versions of *The Happy Time* and *The Rink*. World premieres include *The 25th Annual Putnam County Spelling Bee*, *Caligu-*

*la*, and *A ROCKIN' Midsummer Night's Dream* (featured in the award-winning documentary film *Midsummer* in Newtown). He has directed 14 operas plus benefit concerts honoring Susan Stroman, André DeShields, Maltby & Shire, and Leslie Uggams; as well as for the communities of Sandy Hook, CT and Parkland, FL.

**Susan Varela (Executive Director)** Originally from Milwaukee and a graduate of UW-Stevens Point, her professional career as a performer landed her in New York City for 20 years. She performed on Broadway in *Les Miserables* and at Radio City Music Hall in *The Music of Andrew Lloyd Webber*. Other notable performances include Jo March in *Little Women: The Musical*; Grizabella in *Cats* and Eva Peron in *Evita*. Susan performed in world premieres at both the Denver Center Theater (for their Tony-award winning season) and the Yale Repertory Theater. Before joining the Skylight staff four years ago, she appeared on the Cabot stage in *Sweeney Todd*, *Into the Woods*, *The Wizard of Oz*, and *Les Miserables*. Susan has produced, directed, performed and written for the stage and television alongside her husband, actor Andrew Varela.



# SKYLIGHT MUSIC THEATRE CIRCLE OF DONORS

## Thank You for Your Continued Support

Skylight gratefully acknowledges the following individuals, foundations, organizations, businesses, and government groups who provided generous support within the last year. Each helped Skylight to deliver exceptional music theatre productions and arts education programs for the benefit of the greater Milwaukee community. Many thanks to all the Skylight donors listed. Unfortunately, there was not space to recognize donors under \$250 whose gifts have also contributed to Skylight's success. Please refer to our website for a complete list of donors.

Special thanks to the United Performing Arts Fund, our single largest donor, for its generous annual support.

### **RICHARDSON CIRCLE**

**\$400,000 and above**

United Performing Arts Fund

### **BENEFACTOR CIRCLE**

**\$25,000-399,999**

Anonymous

The Lynde & Harry Bradley Foundation

Four-Four Foundation, Inc.

Greater Milwaukee Fund

Richard & Ethel Herzfeld Foundation

JJF Management Services Inc.

Jan Serr & John Shannon

The Estate of Donald Whitaker

### **STAR CIRCLE**

**\$10,000-25,000**

Bob Balderson

Virgilee Krueck

Howard & Sara Miller

Quarles & Brady LLP

Valerie Johnson

Irene Pilugin Skipper & Walt Skipper

The Shubert Foundation, Inc.

Vicki Reiss

We Energies Foundation

Wisconsin Arts Board

Wispact Foundation

Richard & Kay Yuspeh

Liz Levins & Herb Zien

### **SPONSOR CIRCLE**

**\$5,000-9,999**

Anonymous

Bonnie & Barry Behnken Family

Barb & Mark Bolens

Barbara Brumder Buzard Fund

at the Greater Milwaukee Foundation

Ken Dortzbach & Jennie Kent

T. Arthur & Rhonda Downey

Laura & John Emory, Jr.

Ralph G. Gorenstein Charitable Foundation

Sandy & William Haack

Margaret Heminway Wells Fund

at the Greater Milwaukee Foundation

Judy & Gary Jorgensen

KAY CEE Charitable Trust

Justine Leonard Charitable Fund

Sara & Howard Miller

Milwaukee Arts Board

Asher & Susan Nichols Family Fund

at the Greater Milwaukee Foundation

Northwestern Mutual Foundation

Marcia JS Richards

Blaine & Linda Rieke

Margaret Rosco

Bert L. & Patricia S. Steigleder Charitable Trust

Stollenwerk Family Charitable Foundation

Maxine & David Unger Family Fund

The Valentine Fund

of The Cream City Foundation

### **PRODUCER CIRCLE**

**\$2,500-4,999**

Anonymous

Chris Behling

Laura Mikeworth & Jeffrey Bono

Roger Dickson

Dr. Carl W Eberbach & Elisabeth Falk

Eberbach Fund

at the Greater Milwaukee Foundation

Mary Lou Findley

Foley & Lardner LLP

Judy & David Hecker

Lindsey & Kyle Kopps

Kristie & Terrance Kurtenbach

L.B. & J.K.

Sally Long & Franklin Loo

Tonya & Mike Lueder

Luedke-Smith Fund

at the Greater Milwaukee Foundation

KeleMarie Lyons

Dawne and Ray Manista

Mary McNulty

Patrick Mutsune

Tim Mikeworth

Mary Norton

M Kathleen Ronan Estate

Sikich LLP

Gloria Tracy

Michael Unger

Sue E. Wells

### **DIRECTOR CIRCLE**

**\$1,000-2,499**

George Banda

F. Tessa & Richard Bartels

Lois Bernard

Carolee Beutler

Lawrence Bialcik

Mark & Karen Bitzan

Mr. & Mrs. William H. Boles

Mr. & Ms. Michael Bula

Briggs & Stratton Corporation Foundation



# SKYLIGHT MUSIC THEATRE CIRCLE OF DONORS

John & Susan Brown  
Elizabeth & Brian J. Casey  
John Cegielski  
Margaret & B. Lauren Charous  
Jane & William Crise  
Karen & Jim D'Ambrisi  
Dominion Energy Charitable Foundation  
Drs. Karin & Peter Drescher  
Steve & Buffy Duback  
Heather & Brian Dunn  
Mary & John Emory  
Giacomo Fallucca  
Mary Lou Findley  
Foley & Lardner LLP  
Tim & Sue Frautschi  
Virginia & Mark & Gennis  
Gottlob Armbrust Family Fund  
William Stark Jones Foundation  
Leila & Joseph Hanson  
Cheryl & Roy Hauswirth  
Christine & John Hohnacki  
Maja Jurisic & Don Fraker  
Eileen Kamerick  
Susan & Donald Kerber  
Linda & William Koenig  
Pam Kriger Donor Advised Fund of the  
JFC of the MKE Jewish Federation  
Pat Lombardo  
Mr. & Mrs. Francis Matusinec  
Mr. & Ms. Guy D. McDonald  
Michael Best & Friedrich LLP  
Christine Mortensen  
Denis Murray  
Laurie Ocepek  
Jane O'Connell  
Clare M. Peters Charitable Trust  
John Peters  
Candy & Bruce Pindyck  
Robert W. Baird & Co., Inc.  
Robert W. Baird Foundation  
Ryan Rosmann  
Patricia & Charles Roy  
Carol & Kevin Schuele  
Joanne & Vincent Shiely  
Tom Schrader  
Karen Sostarich  
Audrey J. Strnad  
Joy Towell  
Vasques Family Foundation  
Cheryl & David Walker  
Lee Wolcott  
Diane & Dick Wright  
Leslie Hauser & Karl Wuesthoff  
Joseph & Maryann Zompa  
**DESIGNER CIRCLE**  
**\$500-999**  
Marc and Marta Bianchini  
Charles Bley  
Larry Bonney  
Rick J. Brewer  
Janet & Daniel Brophey

Burns Schrader Fund  
at the Greater Milwaukee Foundation  
Shirley E Butzin Charitable Fund  
Allen Cain  
Dominique Delugeau  
Janet Dunst  
Moir Fitzgerald & Peter Kammer  
Fancy Pants Pet Salon  
Rocio & Joe Froehlich  
Beth Gerlach  
Loyal Grinker  
Arlene Hansen  
Margarete & David Harvey  
Harold Horneffer  
Nancy Jacobs  
Diane & Richard Kane  
Michael & Maureen Klein  
Lindsey Kopps  
Larry Kreiter  
Ann Krueger  
Sandra Laedtke  
Sandra & Dale Landgren  
Barbara Jean Lee  
Justine Leonard  
Ellen Hing & Christopher Leadley  
Lois Malawsky  
Lee Marquardt  
Michele Marsh  
Lori Miller  
Michelle & Michael Nast  
Monica Orr  
Barbara Peters  
Melanie & Frank Popa  
Linda Gale Sampson  
Patricia Struna  
Susan & Andrew Varela  
Bill & Gwen Werner Fund  
at the Greater Milwaukee Foundation  
Marilyn White  
Kathleen & Donald Wilson  
Dick and Diane Wright Charitable Fund  
**CHOREOGRAPHER CIRCLE**  
**\$250-499**  
Anonymous (2)  
Patsy & Richard Aster  
Jill Broekhuizen  
Jan & Dan Brophey  
Sally & Ian Bund  
Valerie Chamberlain  
Catherine & Mario Costantini  
Moir Conzelman  
Gerald & Patricia Freitag  
Foster Family Foundation  
Stanley & Janet Fox  
Elizabeth Garibaldi  
Candace Hoffman & David Gaura  
Margaret Hader  
Marcia Brooks & Edward Hammond  
Susan Hansen  
Judith & John Hartl  
Maryeve & Rob Heath

# SKYLIGHT MUSIC THEATRE CIRCLE OF DONORS

Susan Heymann  
Matt Honigman  
Ron Jacquart  
Jacqueline & Jeffrey Jahnke  
Pat & Ron Jodatt  
Darnelle Kaishian  
Judith & William Kay  
Colleen Lese & Thomas Karakis  
Patricia & Robert Kraft  
Mr. Kenneth C. Krei  
Bernard & Judith Ristal  
Stanley Kritzik  
Charlotte Schall-Krokosky & Henry Krokosky  
Jeanne Kueltchau  
Alice Kuramoto  
Peter Lovance  
Mary Rose & Steven Marinkovich  
Melissa & Chris Marschka  
Bill & Maureen Michaels  
Debbie Prater Mitchelson & Mark Mitchelson  
Paul Stabell & James Moore  
Michael Moorhead  
Jack & Lucia Flynn Murtaugh Fund  
Jean Novy  
Janet & David Olsen  
Tracey Olson  
Molly Perillo  
SaraLynn Evenson & Derek Peruo  
Cecilia Taylor & Fred Pike  
Michael Schall  
Joseph Silvers & Amy Rabideau Silvers  
James Moore & Paul Stabell  
George & Eileen Stone  
David Svejda  
Tom & Michele Tiffany  
Francesca Mayca Wegner  
Adam & Lee-Ann Wiensch  
Katrene Zelenovskiy

## **Tribute Gifts**

*In Honor of Hanna Buchler & Dan Janssen*  
Lee Calvey

*In Memory of Katie Gingrass*  
Mary Gingrass

*In Memory of Stella Maria Hartel*  
Carolyn Averill  
Laura & Tim Barron-Weiss  
Michelle Hartel  
Martha & Jeff Prideaux

*In Memory of James Yuen*  
Joan Yuen

## **In-Kind Donors**

American Players Theatre  
Benson's Restaurant Group

Roger Dickson  
Discovery World  
Door Shakespeare  
Freese's Candy Shoppe  
Ken Dortzbach & Jennie Kent  
Greenfield High School  
Julia Grey  
Susan Heymann  
Kimpton Journeyman Hotel  
Valerie Johnson  
Marcus Center for the Performing Arts  
Milwaukee Art Museum  
Milwaukee Balloon Company  
Milwaukee Chamber Theatre  
Milwaukee Public Museum  
Debbie Prater Mitchelson & Mark Mitchelson  
Next Act Theatre  
Noble Catering  
Northern Sky Theatre  
Onesto  
James Ortiz  
Peninsula Players  
Punch PR  
Saint Kate Arts Hotel  
Savaglia Financial Advisors  
Walt Skipper & Irene Pilugin Skipper  
Thief Wine Shop & Bar  
Third Avenue Playworks  
Saint Kate Arts Hotel  
Savaglia Financial Advisors  
Walt Skipper & Irene Pilugin Skipper  
Thief Wine Shop & Bar  
Third Avenue Playworks  
Michael Unger  
Susan & Andrew Varela

## **Matching Gift Organizations**

Cybergrants  
Dominion Energy  
Fidelity Charitable  
State Farm Companies Foundation  
We Energies Foundation

## **Community Partners**

Historic Third Ward Association  
Visit Milwaukee

*This list represents gifts of \$250 or greater made between July 1, 2022 and March 28, 2024.*

*We make every effort to ensure that Skylight donors are recognized appropriately. If we have made an error, please accept our sincere apologies and contact the Development Team at 414.299.4974 with any correction.*



UNITED PERFORMING ARTS FUND



*If you're for*

**FUN!**

*the arts are for you.*

**AND WE'RE FOR THE ARTS!**

UPAF supports the entertainment and excitement of over 50+ diverse performing arts groups across Southeastern Wisconsin.



**JOIN US AND  
DONATE TODAY AT  
[UPAF.ORG/DONATE](http://UPAF.ORG/DONATE)**



# SKYLIGHT MUSIC THEATRE STAFF

Michael Unger  
**Artistic Director**

## ARTISTIC

Orchestra Contractor..... Michael Lorenz  
Artistic Associate ..... Alexander Coddington

## BOX OFFICE

Box Office Manager..... Kelley Art  
Box Office Supervisor .....Maureen Kailhofer,  
Rylee Zuniga  
Box Office Staff.....Anna Mikula,  
Audwin Short, Zed Waeltz,  
Sian Whitney, Deanne Walter

## DEVELOPMENT

Director of Development.....Sharon K. Rise  
Development Associate..... Erin Lewenauer

## EDUCATION

Education Manager.....Fred Diggins

## FACILITIES

Building Operations Technician..... Robert  
Boose

## FINANCE

Director of Finance ..... Stacy Tatum

## HOUSE MANAGEMENT

Lead House Manager.....Mara Grigg  
House Managers .....Oakley Mertes,  
Cat Sadler, Wesley Yaroch  
Assistant House Managers ..... Sandi Lash,  
Nate Press, Alydia Stangle,  
Zed Waeltz, Dawn Wenzell

Susan Varela  
**Executive Director**

## MARKETING

Director of Marketing and Communications  
.....Meghan Boyle  
IT/Database Manager  
.....Christopher Johnston

## PRODUCTION

Director of Production and Facilities  
.....Matthew Curtis  
Assistant Director of Production and  
Facilities .....Jordan Ilyssa Angelo  
Technical Director ..... Joseph Piirto

## SCENIC

Scene Shop Supervisor/Fleet Manager  
..... Islay Reed

## PROPS

Properties Supervisor..... Simone Tegge

## LIGHTING

Lighting Supervisor .....Dovie Hughes  
Studio Theatre Lighting/Audio Supervisor  
..... Anthony Metz

## COSTUMES

Costume Director ..... Jeanne Schrank  
Wardrobe Supervisor .....Carly Coldren

## SOUND

Interim Audio Supervisor ..... Steve Tonar  
Front of House Engineer .....Jack Purves

# SKYLIGHT MUSIC THEATRE BOARD OF DIRECTORS

## Valerie Johnson, PRESIDENT

Ken Dortzbach, President Elect  
Michael C. Lueder, Secretary  
Barbara Bolens, Treasurer

Chris Behling, VP of Strategic Planning  
Roger Dickson, VP of Development  
Alec Fraser, VP of Governance  
Mary McNulty, VP of Marketing

F. Tessa Escamilla Bartels  
Mary Bridges  
Moira Fitzgerald  
W. Albert Hamwright  
Robert Heath

Lindsey Kopps  
Marni King  
David Lee  
Sara Meaney  
Laura Mikeworth

Howard Miller  
Irene Pilugin Skipper  
Jeffrey M. Speller  
Herb Zien  
Colin Cabot (Honorary)

## PAST PRESIDENTS

(Chronological)

Clair Richardson  
Dale Sorden  
Allen Slichter  
George Krueck  
Timothy Frautschi  
Mary Emory  
Mary Pollock  
Jack Gardner  
Dick Wright

Byron Foster  
Nick Owen  
Sue Frautschi  
Jeff Nohl  
Asher Nichols  
Matt Flynn  
Larry Salustro  
Howard Miller  
Suzanne Hefty

Terry Kurtenbach  
John Stollenwerk  
David Harvey  
John Flanagan  
Alec Fraser  
Michael C. Lueder  
Marta Bianchini  
Brian D. Till

## ADVOCATES

### CHAIR – Laura Emory

Betty Arndt  
Carol Bayerlein  
Polly & Robert Beal  
Katherine & William Biersach  
Wendy & Richard Bliss  
Morton Blutstein  
E.J. Brumder, Jr.  
Patricia & Phillip Crump  
Thallis Drake  
Mary & John Emory  
Mary & Matthew Flynn  
Gabrielle & John Franke  
Susan & Timothy Frautschi  
Gwenn & Joseph Graboyes  
Suzanne Gromme  
Lindsay Holbrook Hammerer  
& Peter Hammerer  
Arlene Hansen  
Katie Harding & James  
Pionkoski  
Cheryl & Roy Hauswirth  
Grace McBain Haydon  
Mary Huntington  
Sharon & Ted Hutton  
Judy & Gary Jorgensen

Jeanne & Richard Kessler  
Susan & Robert Kinde  
Tracey & Richard Klein  
Kipp Koester  
Marie Kohler & Brian Mani  
Patricia & Robert Kraft  
Roz Krause  
Pam Kriger  
Konrad Kuchenbach  
Kristie & Terrance Kurtenbach  
Emilia & Christopher Layden  
Elizabeth Levins & Herbert  
Zien  
Sally Lewis  
Sally Manegold  
Rose Mary & Frank Matusinec  
Sandra & Michael McNeely  
Donna & Anthony Meyer  
Susan Nichols  
Jeff Nohl  
Jody Nolan  
Joe Nolan  
Barbara Notestein  
Jane S. O'Connell  
Candy & Bruce Pindyck  
Nancy Pinter & R. Max  
Samson

Roberta & Larry Polacheck  
Ildy & Skip Poliner  
Hattie Purtell  
Gordana & Milan Racic  
Kristine & James Rappe  
Linda & Blaine Rieke  
Lee Dougherty Ross & Jerold  
Ross  
Patricia & Charles Roy  
Richard Schilffarth  
Kathleen & Thomas Schrader  
Carol & Kevin Schuele  
Marsha Ruth Sehler  
Maureen & Larry Sherkow  
Joanne & Vincent Shiely, Jr.  
Paige Sinden  
Lisa & Paul Sweeney  
John W. Taylor  
Pauline & Calvin Verbrugge  
Anne & Tom Wamser  
Gwen & William Werner  
Nora & Jude Werra  
Kathleen & David Williams  
Richard Wright





# Skylight

music theatre

## Help Us to Raise the Curtain!

As a non-profit theatre, ticket sales only cover 50% of our overall costs to produce a show. Your tax-deductible gifts will allow us to continue our incredible productions, invite students in the area to attend at no cost to them, and continue our outstanding educational programs like KidsWrites.

**Thank You for Your Support of Skylight!**



**Michael Unger**  
Artistic Director



**Susan Varela**  
Executive Director



**SCAN HERE  
TO MAKE  
YOUR GIFT**

# KEEP DRAMA IN THEATERS AND OUT OF ELECTIONS

Support local democracy with a donation to the League of Women Voters of Milwaukee County

The League of Women Voters of Milwaukee County is a nonpartisan, nonprofit, grassroots organization that encourages informed civic engagement.

- ★ Voter registration at schools, naturalization ceremonies, community events
- ★ VOTE411.org website for unbiased election information
- ★ Candidate forums
- ★ Election observation
- ★ Civic education
- ★ Citizen advocacy

**LWV** LEAGUE OF WOMEN VOTERS'  
OF MILWAUKEE COUNTY

Empowering voters. Defending democracy.

[www.lwvmilwaukee.org](http://www.lwvmilwaukee.org)

image: Freepik.com

